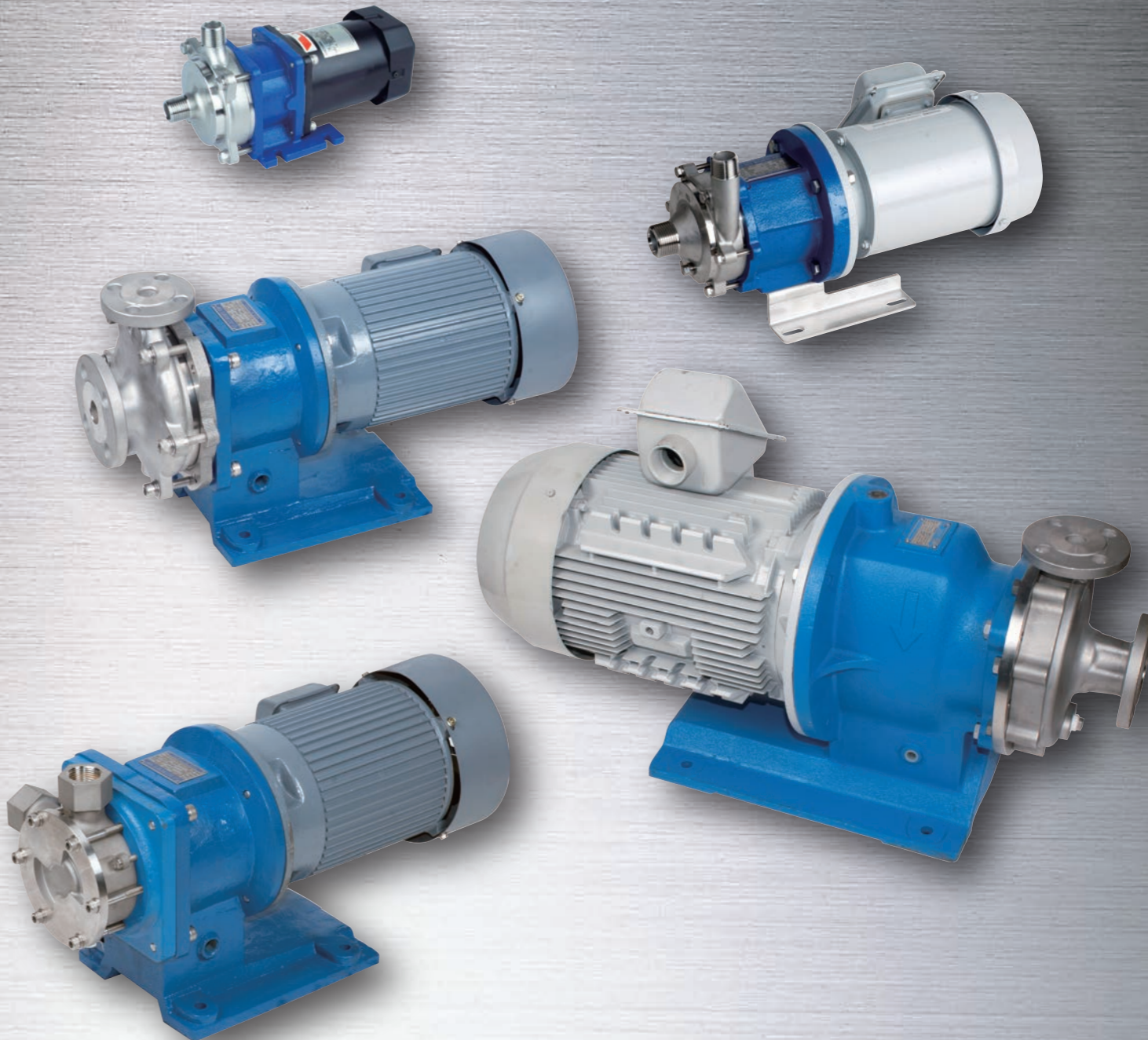


DGA ISO9001:2008

RICO PUMP

316不銹鋼無軸封磁力幫浦

**STAINLESS STEEL MADE. COMPACT AND SEALLESS
MAGNETIC DRIVE CENTRIFUGAL PUMPS**



■ 磁力泵浦的特點 (The features of Magnetic drive pumps)

- 1) 無洩漏 (No Leak)
 - a. 無軸封無洩漏 (No shaft seal without leakage)。
 - b. 無洩漏特點，使運轉更安全可靠 (This no-leak feature makes it reliable and safe)。
- 2) 維修簡單 (Simple maintainace)

簡潔設計使得維修非常簡單 (Simple and compact design makes maintenance very simple)。
- 3) 耐高溫達280度 (High temperature resistance up to 280 degrees)。
- 4) 耐低溫達-80度 (Low temperature resistance down to -80 degrees)。
- 5) 不鏽鋼製 (Stainless steel made)。
- 6) 可用於有雜質液體，只要不產生附著 (It can be used for liquids containing impurities as long as the liquid doesn't stick.)。
 - a. 粒徑在500micron下可用於5%含量 (5% content, particle size 500 μm)。
 - b. 粒徑在100micron下可用於8%含量 (8% content, particle size 100 μm)。
- 7) 現貨供應 (Quick delivery)

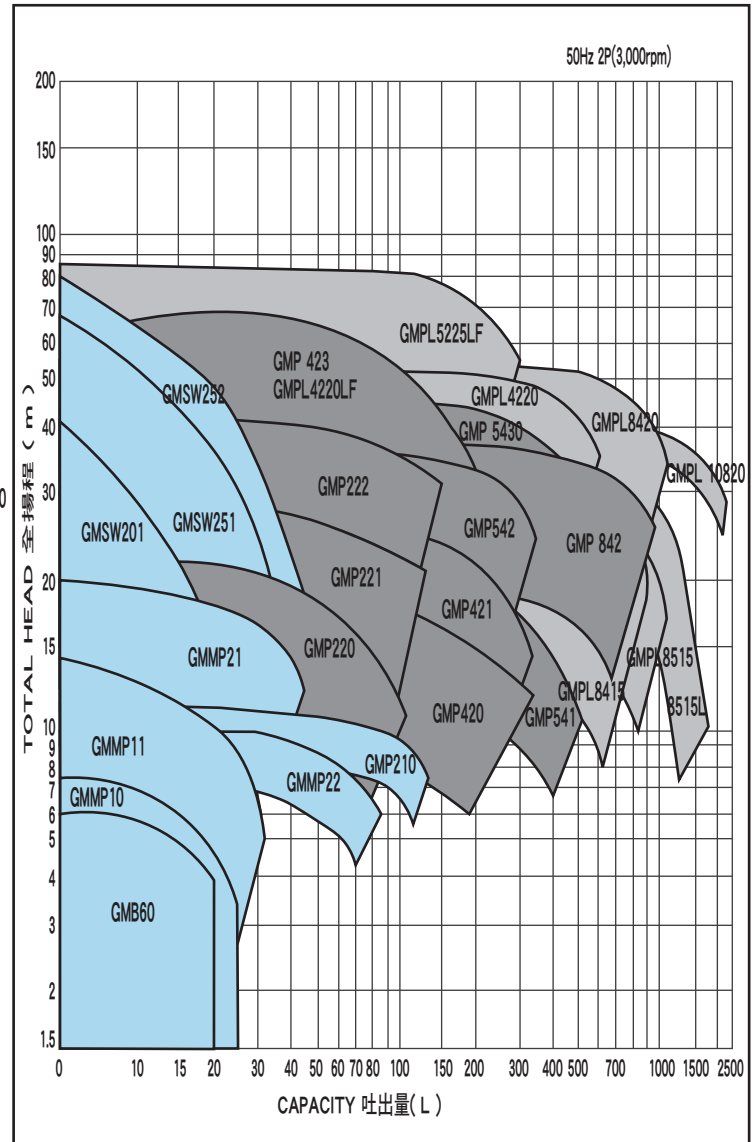
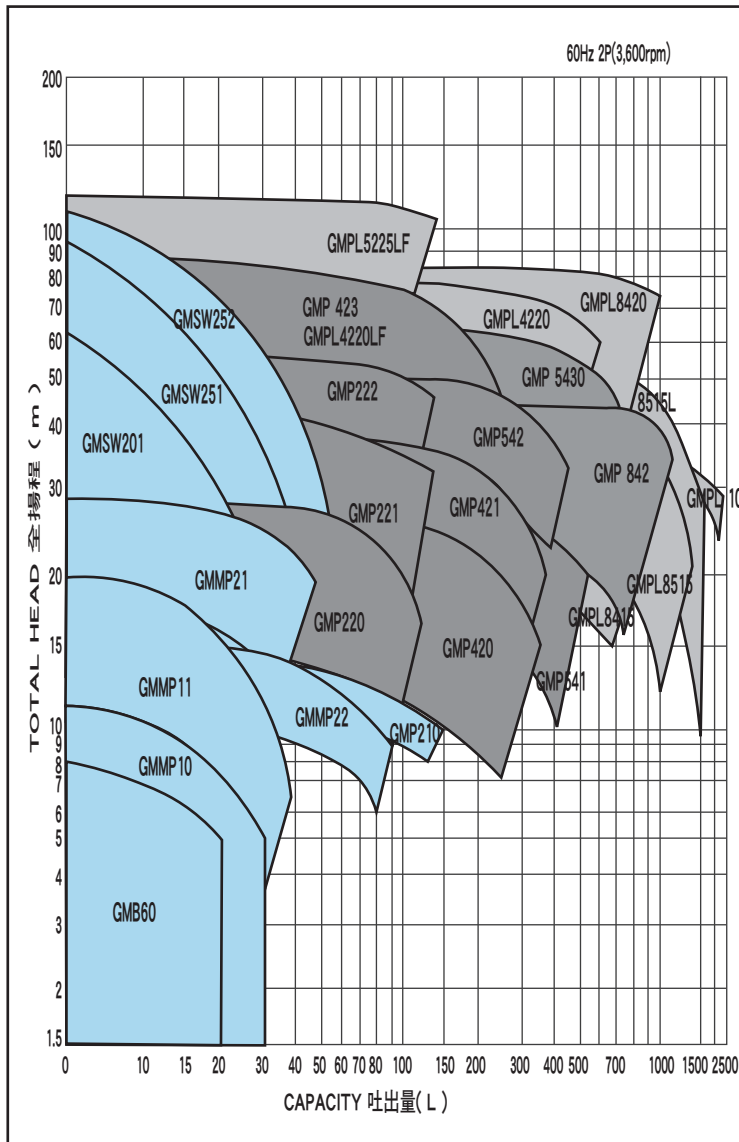
pump standard specification

pump 特性一覽表

PUMP TYPE	GMB		GMMP / GMML / GMMH		GMSW / GMLW / GMHW		GMP / GML / GMH		GMPL / GMLL / GMHL	
最大揚程 TDH Max. (m)	60Hz 8	50Hz 6	60Hz 29	50Hz 20	60Hz 108	50Hz 80	60Hz 88	50Hz 61	60Hz 120	50Hz 85
最大流量 Capacity Max. (L/min)	20	20	123	99	140	100	1328	1345	2300	2294
最高溫 Temperature Max.	130°C		150°C / 150°C / 280°C		150°C / 150°C / 230°C		150°C / 150°C / 280°C		150°C / 150°C / 280°C	
最低溫 Temperature Min.	-20°C		-30°C / -80°C / -30°C		-30°C / -80°C / -30°C		-30°C / -80°C / -30°C		-30°C / -80°C / -30°C	
最大比重 Specific Gravity Max.	1.1		2		1.1		2		2	
最大黏度 Viscosity Max.	50cp		120cp		50cp		330cp		330cp	
設計壓力 Design pressure	6kgf/cm ²		6kgf/cm ²		16kgf/cm ²		10kgf/cm ²		13kgf/cm ²	
口徑(入/出)Bore (suc / dis)	1/2		15/15 ^A ~25/20 ^A		PT 1/2 - PT 1"		25/20 ^A ~80/50 ^A		40/25 ^A ~100/80 ^A	
Flange rating	PT THREAD		PT THREAD		PT 1/2 - PT 1"		JIS10K / ANSI150		JIS10K / ANSI150	
葉輪樣式 Impeller type	Closed		Closed		TURBINE VANE		Closed		Closed	
馬達形式 Motor type	60W		Horizontal 2P 90W ~ 550W		Horizontal 2P · 4P 0.75kW ~ 3.7kW		Horizontal 2P · 4P 0.75kW ~ 7.5kW		Horizontal 2P · 4P 2.2kW ~ 18.5kW	
材質 Casing	SCS14 (SUS316)		SCS14 (SUS316)		SCS14 (SUS316)		SCS14 (SUS316)		SCS14 (SUS316)	
墊片 Gasket	PTFE		PTFE / GRAPHITE / GRAPHITE		PTFE		PTFE / GRAPHITE / GRAPHITE		PTFE / GRAPHITE / GRAPHITE	
軸承 Bearing	SSiC		SSiC		SSiC		SSiC		SSiC	
軸套 Sleeve	SSiC		SSiC (Shaft)		SSiC		SSiC		SSiC	
磁鐵 Magnet	R.earth Nd		R.earth Nd / R.earth Nd / SmCo		R.earth Nd / R.earth Nd / SmCo		R.earth Nd / R.earth Nd / SmCo		R.earth Nd / R.earth Nd / SmCo	
泵樣式 Models of pump	1		4		4		14		9	
軸承樣式 Type of bearing	1		1		1		1		1	

適用液體 TYPICAL APPLICATIONS

CITRIC ACID	CHLOROSULFONIC ACID	ISOPROPYL ALCOHOL	NAOH
ACETIC ACID	ACETALDEHYDE	STYRENE	MALEIC ACID
ACETON	GLYCOL	VINYL CHLORIDE	H ₂ SO ₄
ACRYLONITRILE	ETHYLENE	METHACRYLATES	METHANOL
ACRYLIC ACID	AMMONIUM HYDROXIDE	TDI	TOLUENE
ETHYLENE OXIDE	BENZENE	ETHANOL	VINYL ACETATE
AMYL ACETATE	PHENOL	CHLOROFORM	MDI
ANHYDROUS AMMONIA	HEAT TRNSFER FLUID	PHOSPHORIC ACID	DO MONOMER
FLUORINERT(3M)	HEXANE	CYCLOHEXANE	HOT-WATER
BUTADIENE	PHOSGENE	SODIUM CARBONATE	XYLENE
HYDROFLUORIC ACID	PURE WATER	SODIUM CHLORATE	WATER

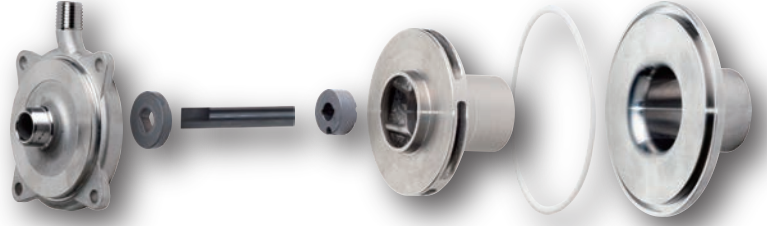


GMB 60W

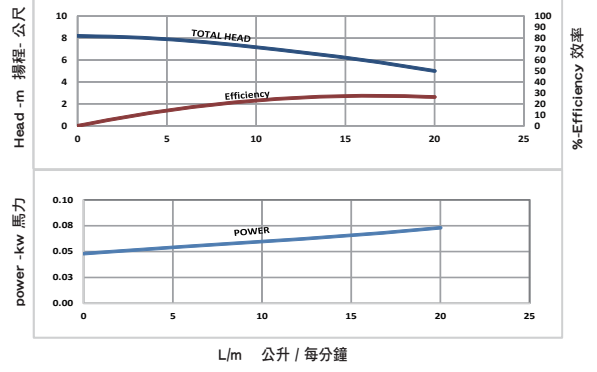
微型離心泵

COMPACT STAINLESS STEEL MAGNET DRIVE PUMPS

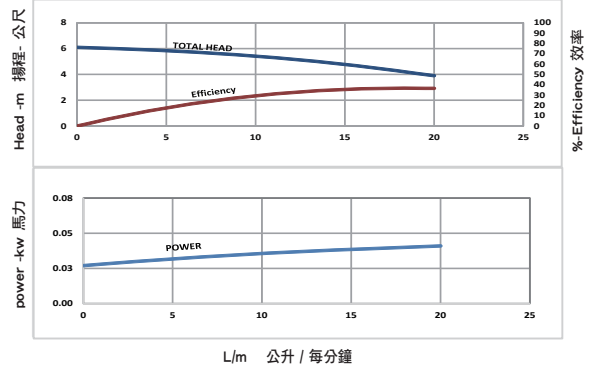
GMB (-20 °C ~ +130 °C)



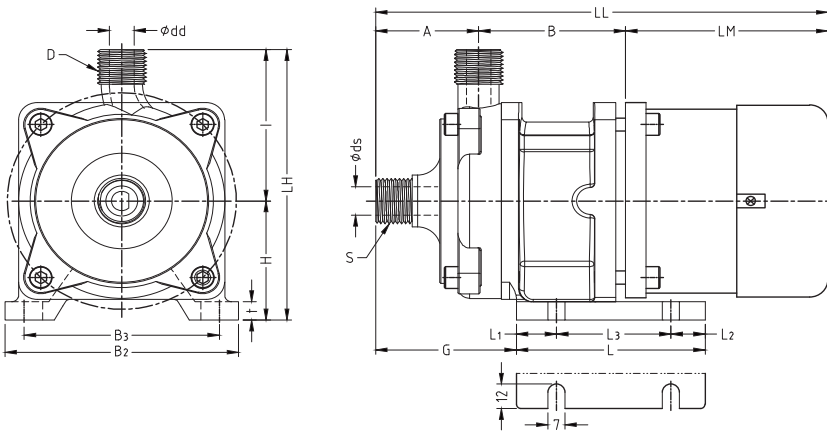
GMB60 60Hz



GMB60 50Hz



尺寸 DIMENSIONS (GMB)

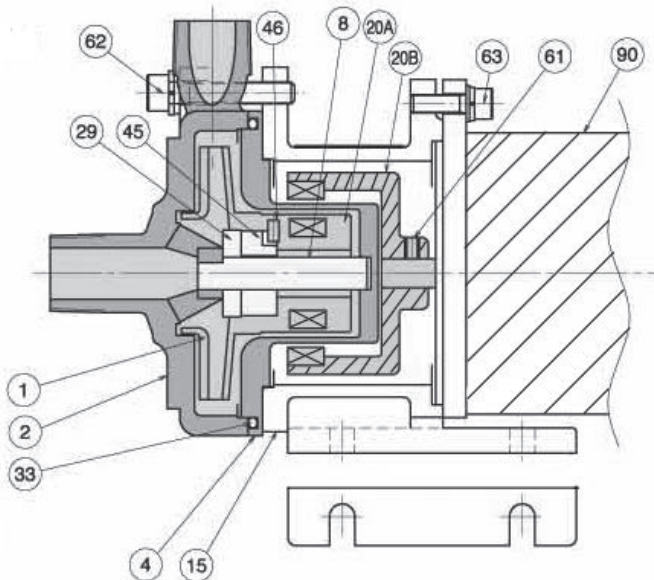


單位/unit:mm

型號 PUMP SIZE	馬達 MOTOR		進出口 BORE				泵和馬達 PUMP & MOTOR DIMENSION							馬達座 BASE PLATE						重量 WEIGHT APPROX (kg)				
	框號 FRAME	輸出 OUT PUT	入口 SUCT		出口 DISCH		A	B	C	H	I	LH	LM	LL	G	L1	L2	L3	B2	B3	t	PUMP	MOTOR	TOTAL
			口徑 Ds	法蘭 S	口徑 Dd	法蘭 D																		
GMB	-	60	14	PT1/2	13	PT1/2	45	64	0	55	70	125	120	229	66	17.5	15	50	100	85	8.5	2.4	2.2	4.6

※ L,LL dimensions and motor weight may vary depending on motor used. LM與LL尺寸與重量會依廠牌不同而改變。
 ※ This motor size and weight, begin TECO motor as the basis. 此表馬達尺寸與重量,皆以東元馬達為依據。

材質表 MATERIALS (GMB)



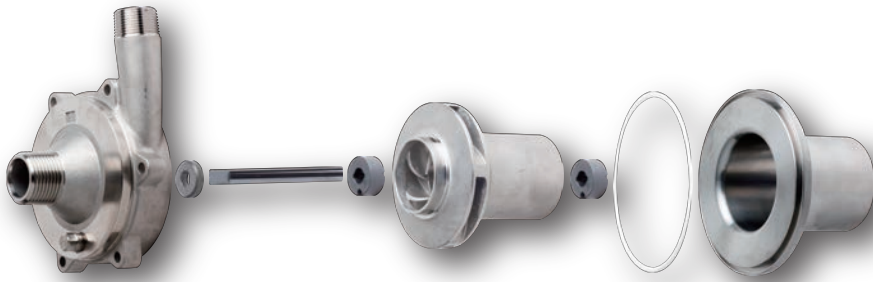
編號 MARK	零件名稱 NAME OF PART	中文名稱	材質 MATERIALS	數量 No.REQD
1	IMPELLER	葉輪	SCS14	1
20A	MAGNET COUPLING (PUMP)	內磁	SUS316	1
2	CASING	前蓋	SCS14	1
4	REAR CASING	後蓋	SUS316	1
8	SHAFT	軸心	SSIC	1
15	FRAME ADAPTER	馬達座	FC200	1
20B	MAGNET COUPLING (MOTOR)	外磁	FCD	1
29	THRUST RING	止推環	SSIC	1
33	O RING	O環	PTFE	1
45	BUSHING	軸受	SSIC	1
46	PIN	定位銷	SUS316	1
61	SIT SCREW	固定螺絲	SCM435	1
62	CASING BOLT	前蓋螺絲	SUS304	4
63	MOTOR BOLT	馬達螺絲	SUS304	4
90	MOTOR	馬達	-	1

GMMP

90W~550W

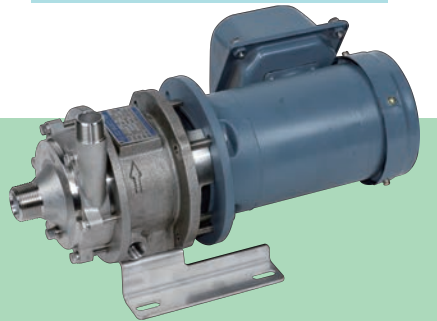
小型金屬磁力泵浦

SMALL STAINLESS STEEL MAGNET DRIVE PUMPS FOR EQUIPMENT USE



For liquid of low temperature

GMML 低溫型(-80°C ~ +150°C)



* 設置氮氣充填孔,防止低溫下外磁結冰.

Nitrogen purge port is provided to prevent moisture from freezing in the frame adapter.

* 使用稀土性磁鐵.

Rare earth Nd magnets are used.

* 使用低溫專用石墨墊片.

Low temperature gasket material is used.

For liquid of high temperature

GMMH 高溫型(-30°C ~ +280°C)



* 使用釷鈷高溫磁鐵

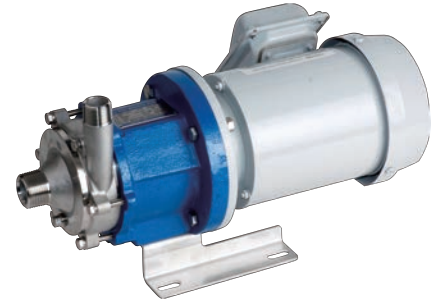
Rare earth SmCo magnets are used.

* 使用高溫專用石墨墊片.

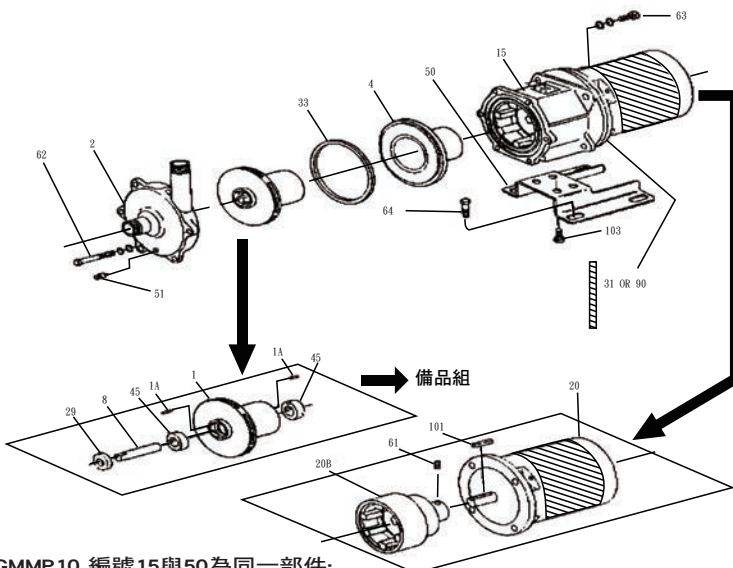
High temperature gasket material is used.

Standard

GMMP 標準型(-30°C ~ +150°C)



材質表 MATERIALS (GMMP)



編號 MARK	零件名稱 NAME OF PART	中文名稱	材質 MATERIALS	數量 No.REQ'D
1	IMPELLER & MAGNET COUPLING (PUMP)	葉輪內磁組	SCS14 & SUS316	1
1A	PIN	定位銷	SUS316	2
2	CASING	前蓋	SCS14	1
4	REAR CASING	後蓋	SUS316	1
8	SHAFT	軸心	SSiC	1
15	FRAME ADAPTER (*1) (*3)	馬達座	FC200	1
20	MOTOR	馬達	—	1
20B	MAGNET COUPLING (MOTOR)	外磁	FCD	1
29	THRUST RING	止推環	SSiC	1
31 (90)	SPACER (*2)	中隔板	SS400 (SUS304)	1
33	O RING (*4)	O環	PTFE	1
45	BUSHING	軸受	SSiC	2
50	BASE	底座	SUS304	1
51	PLUG	洩水螺絲	SUS316	1
61	SET SCREW	固定螺絲	SCM435	1
62	CASING BOLT	前蓋螺絲	SUS304	6
63	MOTOR BOLT	馬達螺絲	SUS304	4
64	BASE BOLT	底座螺絲	SUS304	4
101	COUPLING KEY (MOTOR)	馬達鍵	SCM435	1
103	BOLT	螺絲	SUS304	4

* 1.GMMP10 編號15與50為同一部件;

With GMMP10,frame adapter 15 and base 50 come in one body.

* 2.GMMP10 編號為31,GMML/GMMH 編號為90 ;

Spacer 31 is attached to GMMP10 only,Spacer 31 is attached to GMMH and GMML

* 3.GMMH11,21 / GMML 11,21 馬達座為304 ;

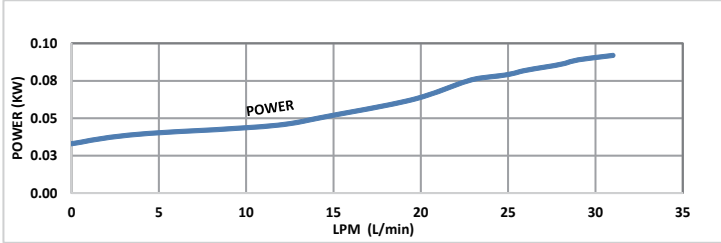
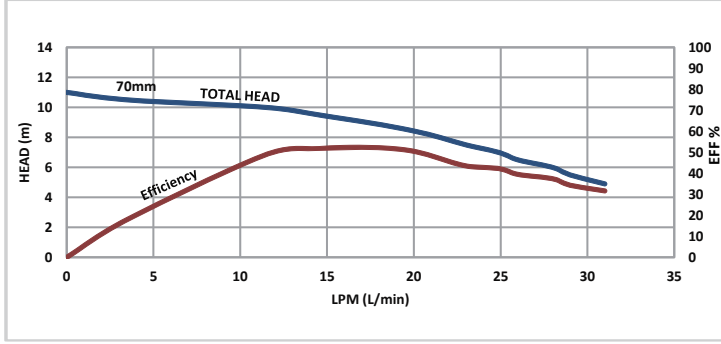
Framd adapter 15 for GMMH11,21 comes is SCS13.

* 4.GMMH/GMML 33號墊片材質為石墨 ;

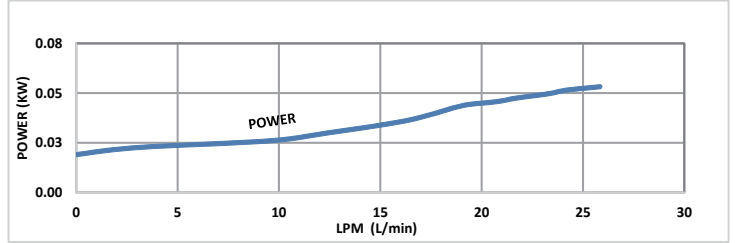
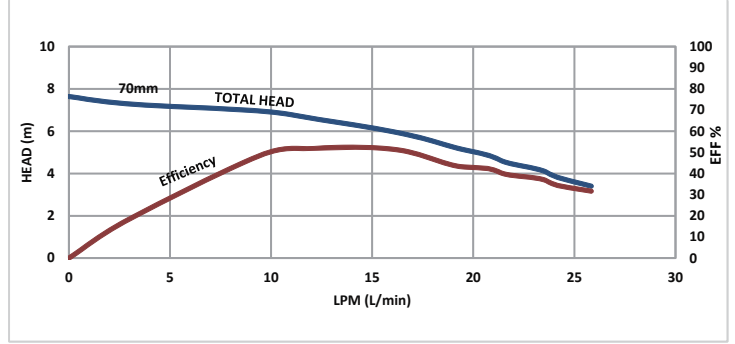
ORING 33 for GMMH and GMML comes in GASKET.

■性能曲線 PERFORMANCE CURVE:

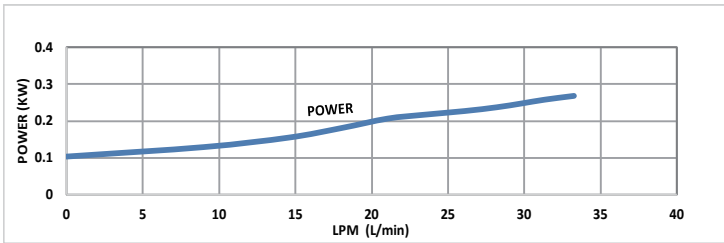
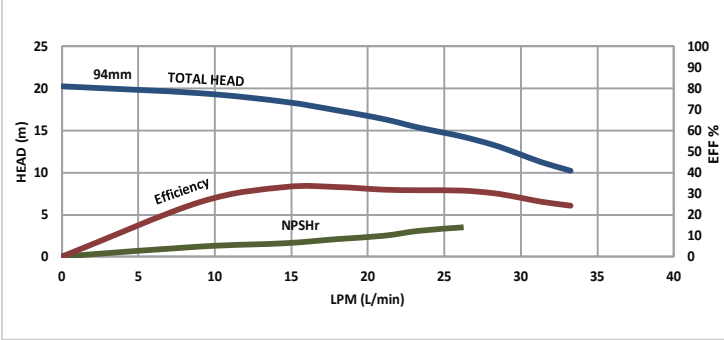
GMMP10 60Hz



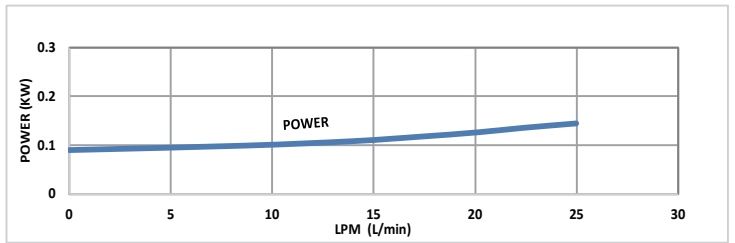
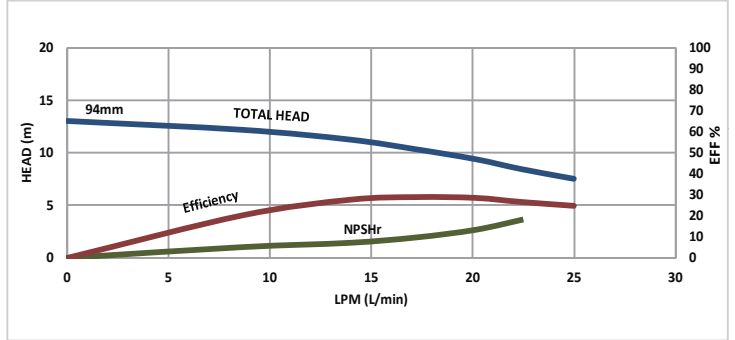
GMMP10 50Hz



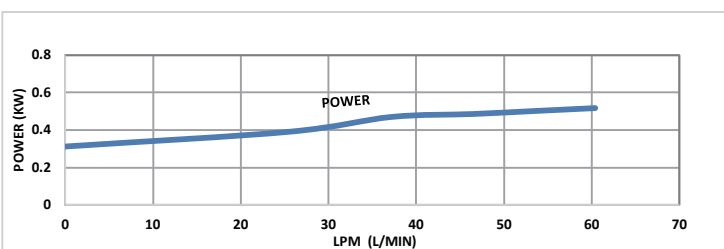
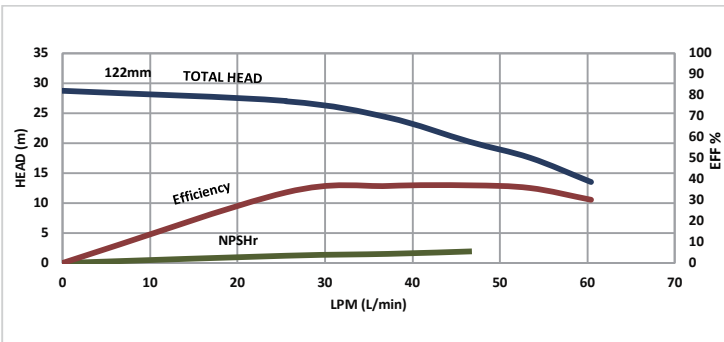
GMMP11 60Hz



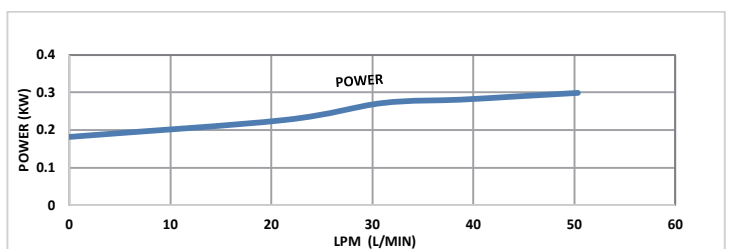
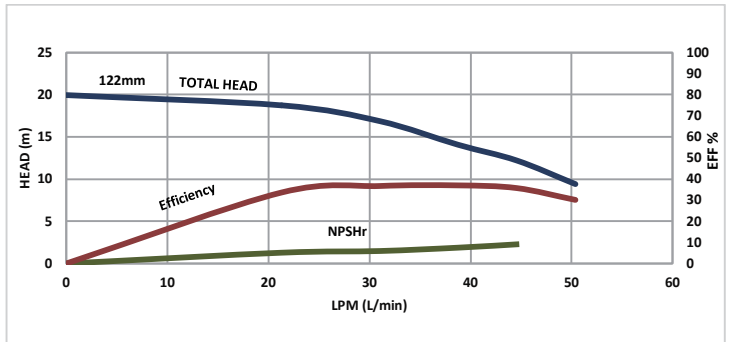
GMMP11 50Hz

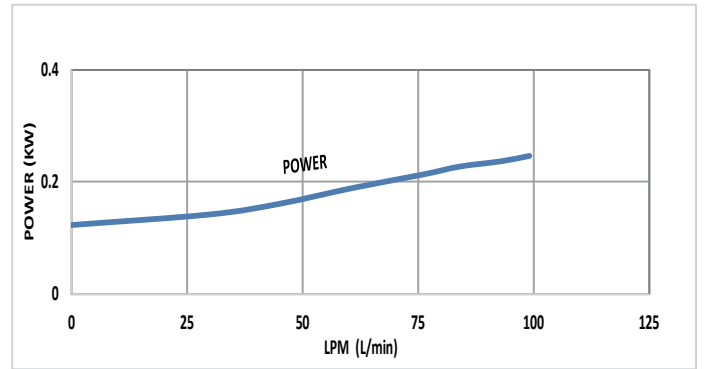
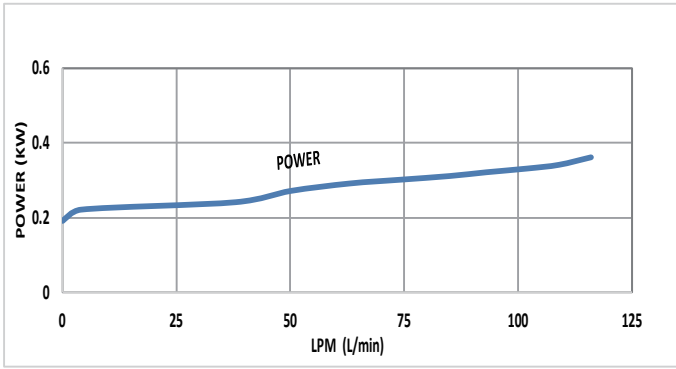
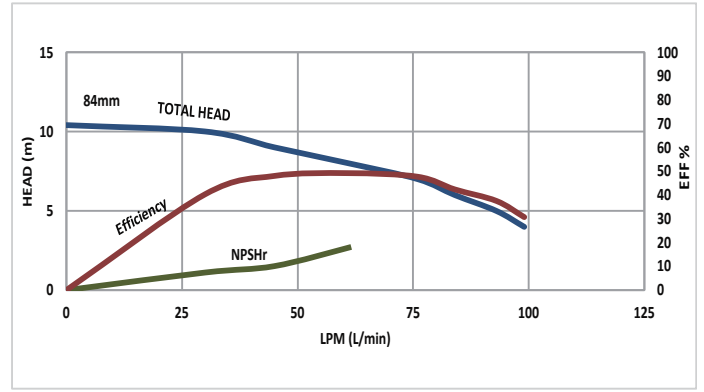
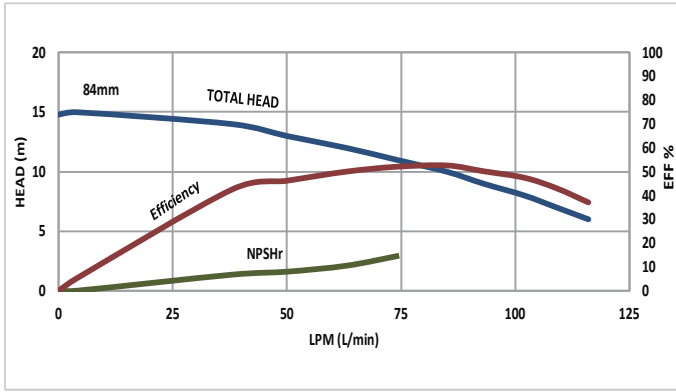


GMMP21 60Hz

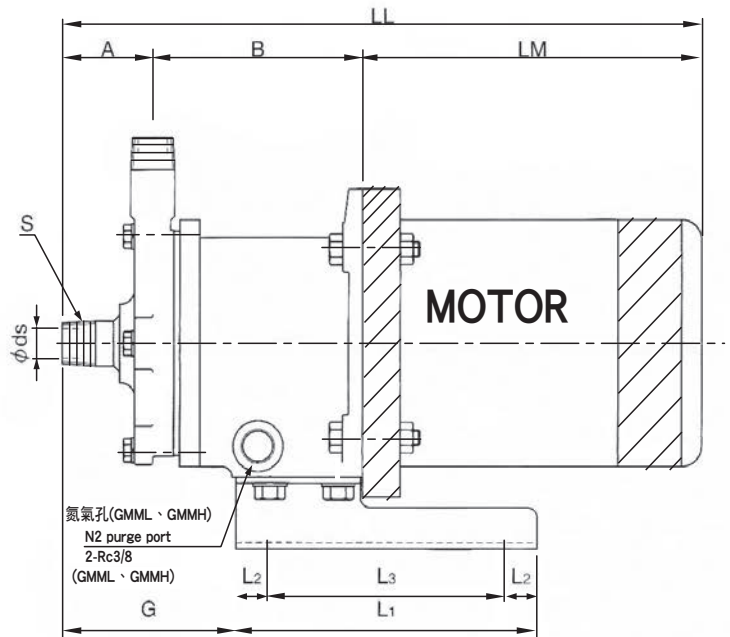
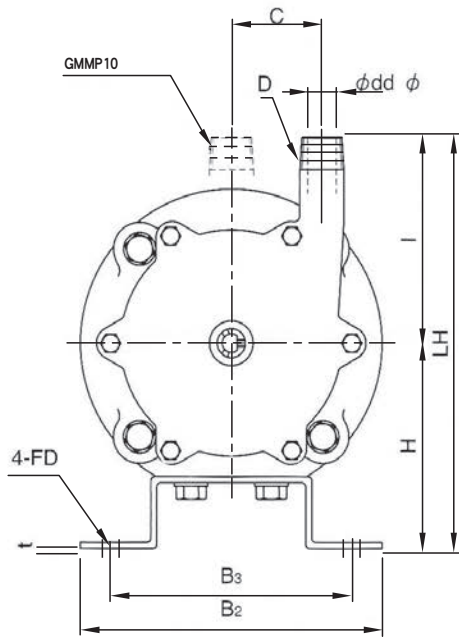


GMMP21 50Hz





■尺寸 DIMENSIONS (GMMP)



單位/unit:mm

型號 PUMP SIZE	馬達 MOTOR		進出口 BORE				泵和馬達 PUMP & MOTOR DIMENSION								馬達座 BASE PLATE						重量 WEIGHT APPROX (kg)				
			入口 SUCT		出口 DISCH		A	B	C	H	I	LH	LM	LL	G	L1	I2	L3	B2	B3	t	FD	PUMP	MOTOR	TOTAL
	框號 FRAME SIZE	輸出 OUT PUT (W)	口徑 Ds	法蘭 S	口徑 Dd	法蘭 D																			
GMMP10	—	90	15	PT1/2	13	PT1/2	45	118	0	65	70	135	120	283	60	90	15	60	110	95	6	ψ9	6.8	3.2	10
	—	150											135	298									6.8	3.2	10
GMMP11	63M	200	15	PT1/2	15	PT1/2	45	104	45	100	100	200	209	358	86	150	16	118	150	120	3	ψ9.5	8	10	18
	71M	400											231	387									(70)	8	13
GMMP21	71M / 71S	400 / 550	20	PT3/4	20	PT3/4	50	112	50	100	120	220	231	393	77	150	16	118	150	120	3	ψ9.5	11	13	24
GMMP22	71M / 71S	400 / 550	25	PT1	20	PT3/4	60	113	45	100	100	200	231	404	103	150	16	118	150	120	3	ψ9.5	10	13	23

※ LM,LL dimensions and motor weight way vary depending on motor used。LM與LL尺寸與重量會依廠牌不同而改變。

※ Figures in brackets are for MMH11,22 and MML11,22。(括弧)內為MMH11,22,MML11,22 的尺寸標示

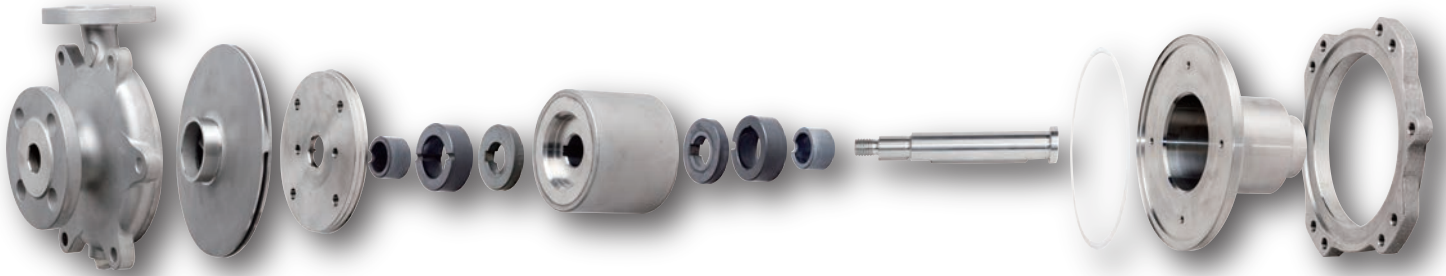
※ This motor size and weight, begin TECO motor as the basis。此表馬達尺寸與重量,皆以東元馬達為依據。

GMP

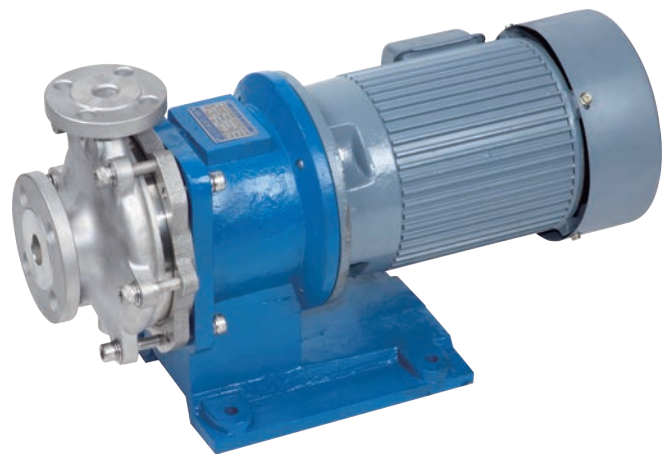
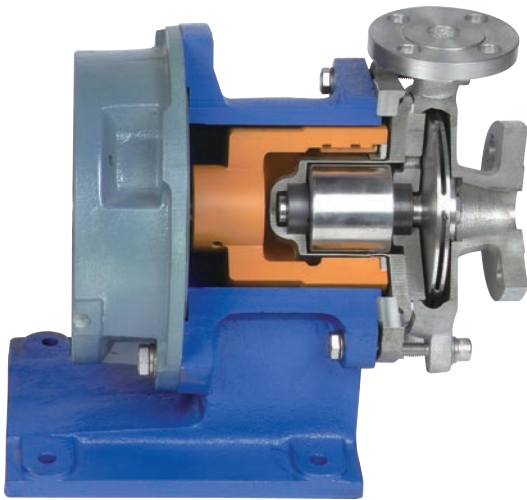
0.75kW~5.5kW

中型金屬磁力泵浦

MID-SIZE STAINLESS STEEL MAGNET DRIVE PUMPS



GMP 標準型 (-30°C ~ +150°C)



For liquid of high temperature

GMH 高溫型 (-30°C ~ +280°C)



* 馬達座有散熱設計。

Fin type frame adapter dissipates heat away from pump.

* 使用釷鈷高溫磁鐵。

Rare earth SmCo magnets are used.

* 使用高溫專用石墨墊片。

High temperature gasket material is used.

For liquid of low temperature

GML 低溫型 (-80°C ~ +150°C)



* 設置氮氣充填孔,防止低溫下外磁結冰。

Nitrogen purge port is provided to prevent moisture from freezing in the frame adapter.

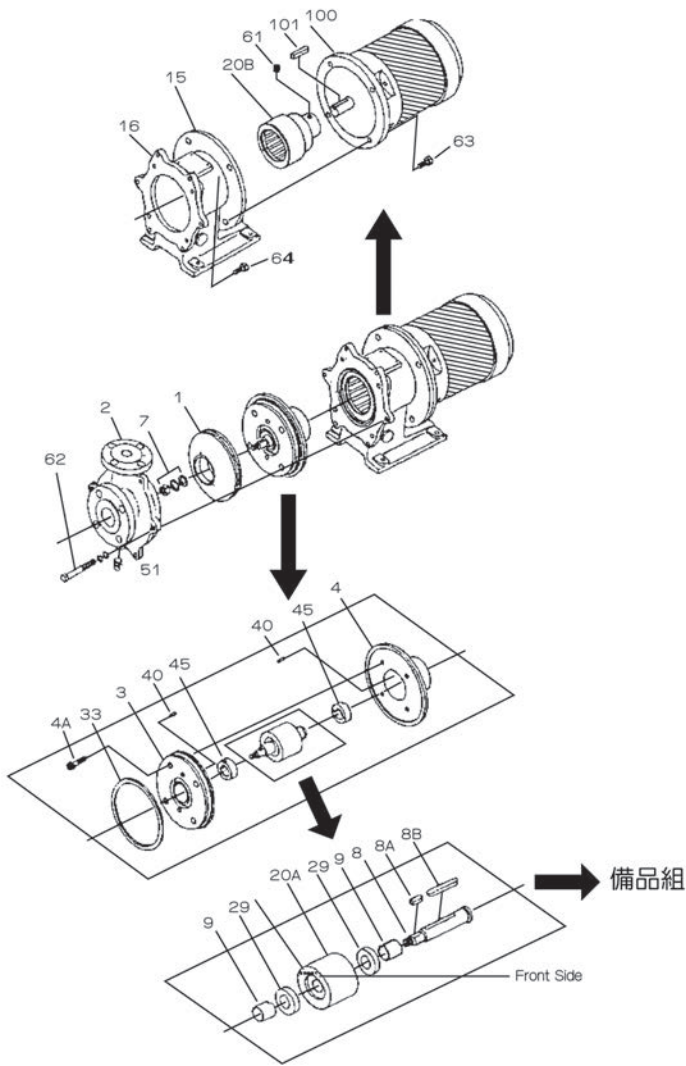
* 使用稀土性磁鐵。

Rare earth Nd magnets are used.

* 使用低溫專用石墨墊片。

Low temperature gasket material is used.

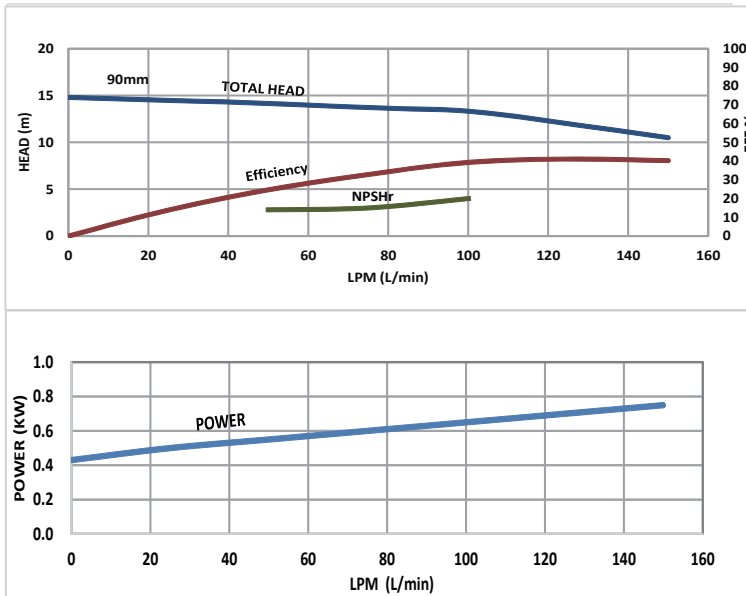
■材質表 MATERIALS (GMP)



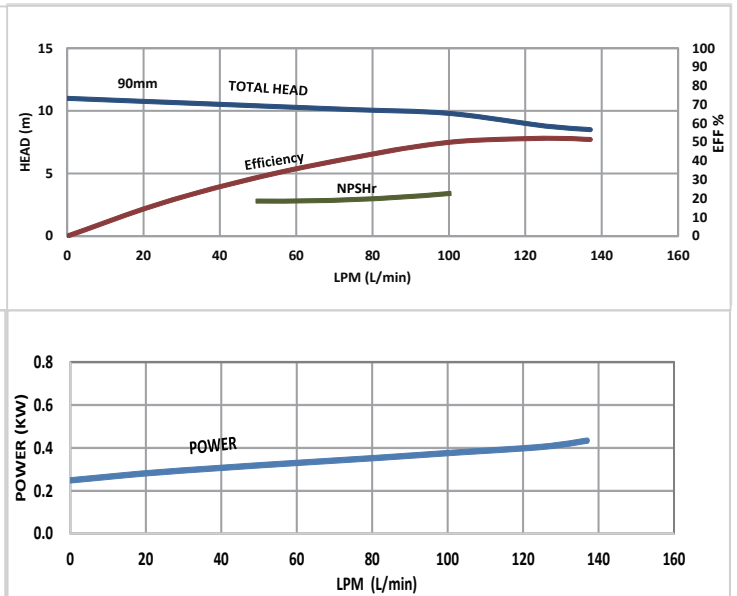
編號 MARK	零件名稱 NAME OF PART	中文名稱	材質 MATERIALS	數量 No.REQD
1	IMPELLER	葉輪	SCS14	1
2	CASING	前蓋	SCS14	1
3	CASING COVER	後蓋板	SUS316	1
4	REAR CASING	後蓋	SUS316	1
4A	HEXAGON SOCKET HEAD CAP SCREW	後蓋板螺絲	SUS316	4
7	IMPELLER NUT	葉輪螺帽	SUS316	1
8	SHAFT	軸心	SUS316	1
8A	IMPELLER KEY	葉輪固定鍵	SUS316	1
8B	COUPLING KEY (PUMP)	內磁固定鍵	SUS316	1
9	SLEEVE	軸心襯套	SSiC	2
15	FRAME ADAPTER	馬達座	FC200	1
16	FLANGE (CASING)	泵頭固定框架	SUS304	1
20A	MAGNET COUPLING (PUMP)	內磁	SUS316	1
20B	MAGNET COUPLING (MOTOR)	外磁	FCD	1
29	THRUST RING	止推環	SSiC	2
33	SHEET GASKET	前蓋墊片	MP:PTFE MH/ML: 石墨	1
40	PIN	襯套止動螺絲	SUS316	2
45	BUSHING	軸受	SSiC	2
51	PLUG	洩水螺絲	SUS316	1
61	SET SCREW	外磁固定螺絲	SCM435	1
62	HEXAGON SOCKET HEAD CAP SCREW (CASING)	前蓋鎖附螺絲	SUS304	6
63	HEXAGON HEAD BOLT (MOTOR)	馬達鎖附螺絲	SS400	4
64	HEXAGON HEAD BOLT (PUMP)	泵頭固定螺絲	SUS304	4
100	MOTOR	馬達	—	1
101	COUPLING KEY (MOTOR)	馬達鍵	S45C	1

■性能曲線 PERFORMANCE CURVE:

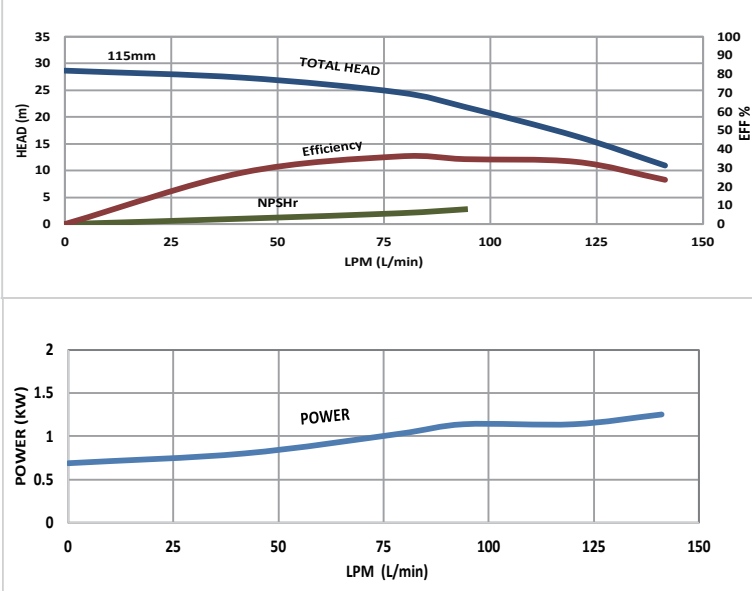
GMP210 60Hz



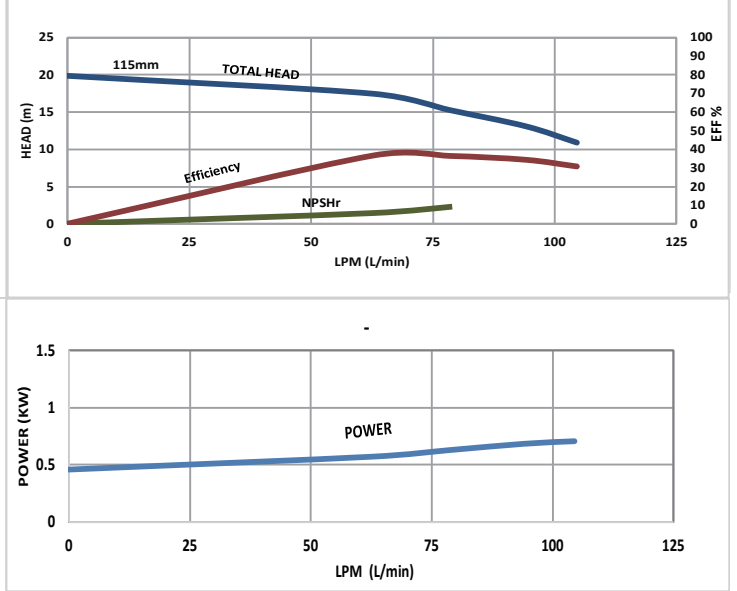
GMP210 50Hz



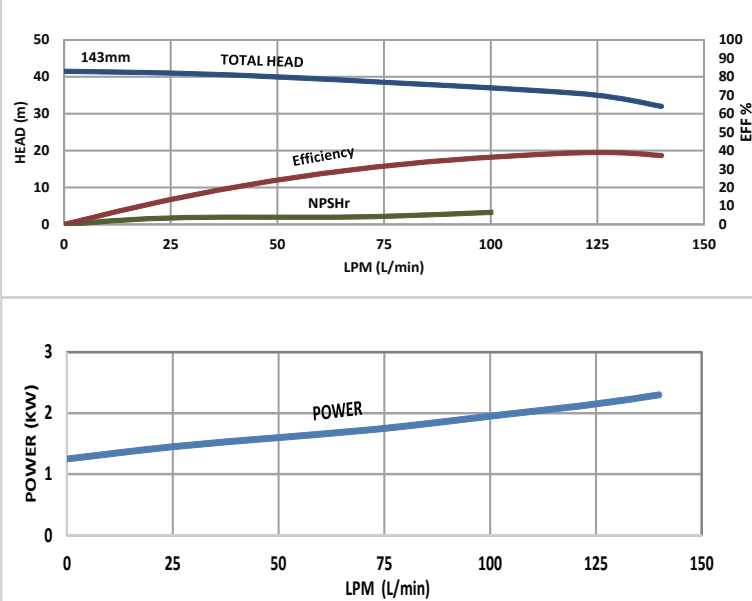
GMP220 60Hz



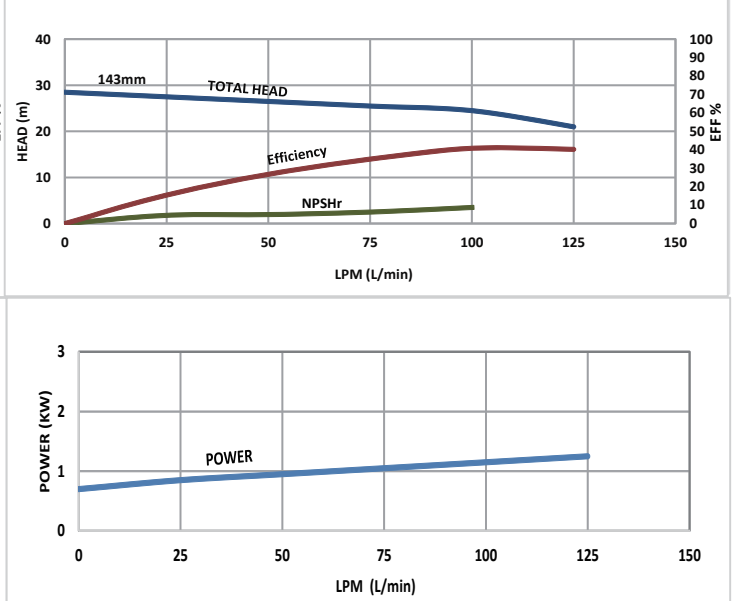
GMP220 50Hz



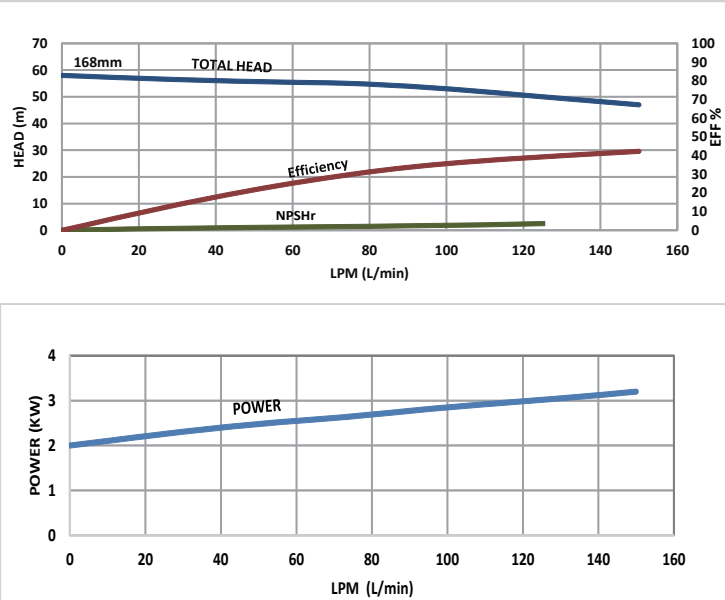
GMP221 60Hz



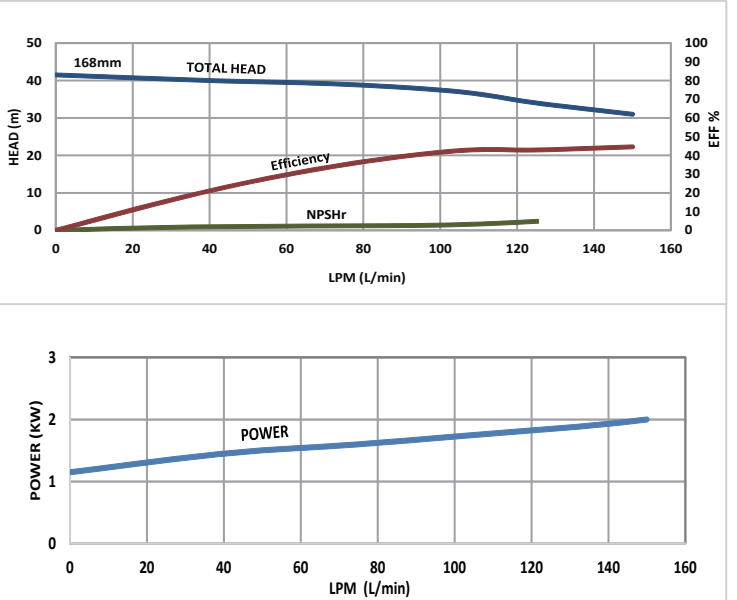
GMP221 50Hz



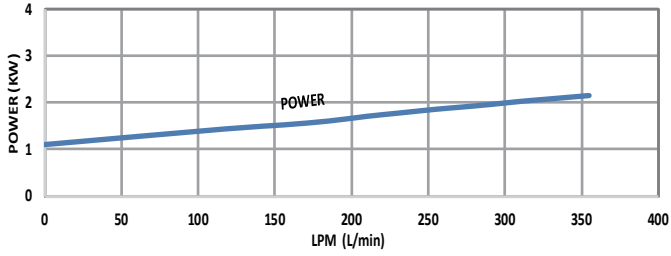
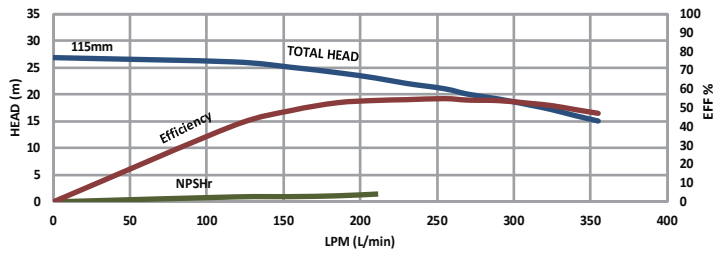
GMP222 60Hz



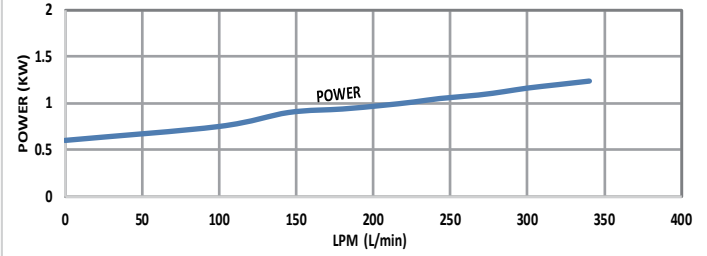
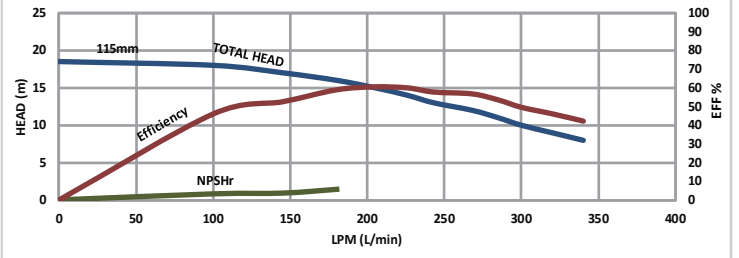
GMP222 50Hz



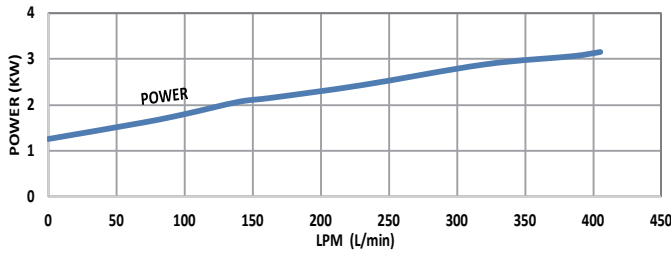
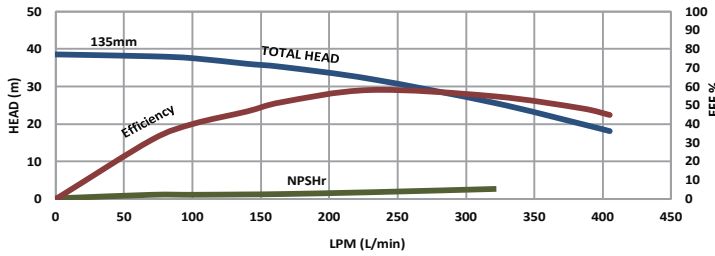
GMP420 60Hz



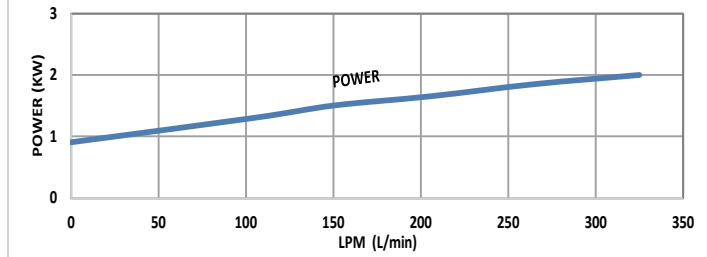
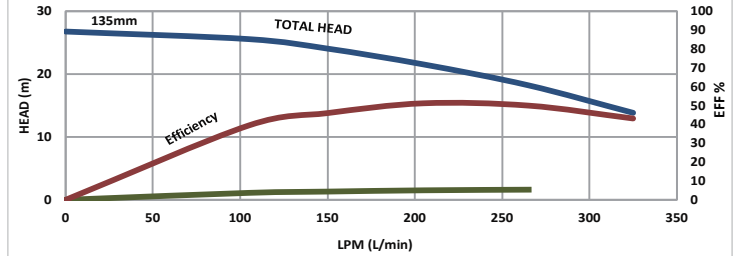
GMP420 50Hz



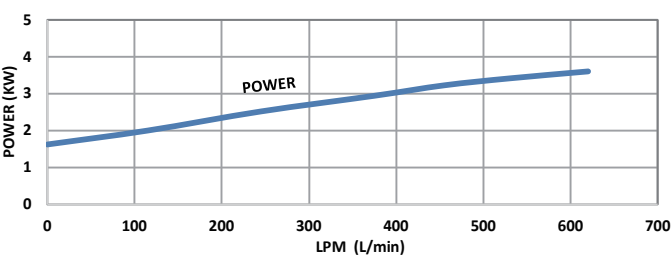
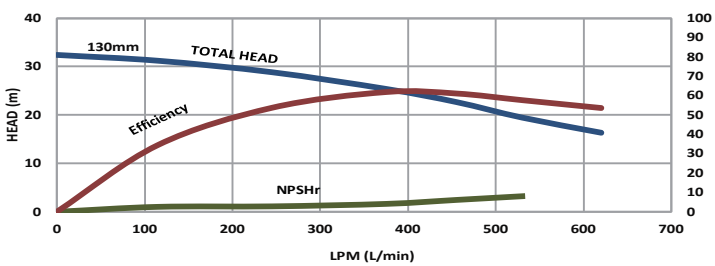
GMP421 60Hz



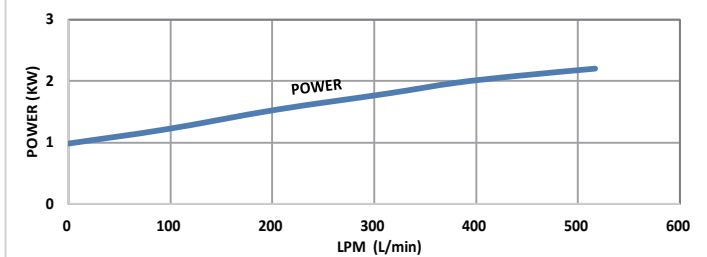
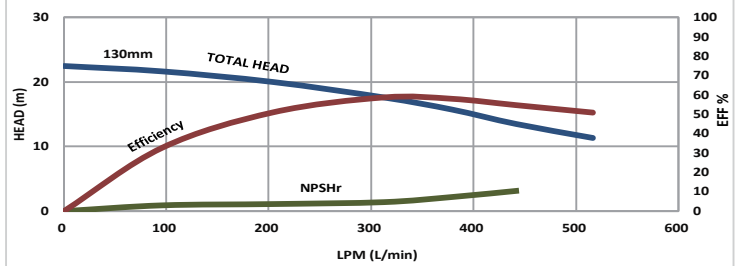
GMP421 50Hz



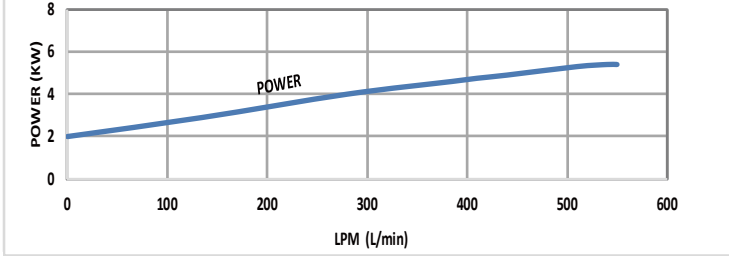
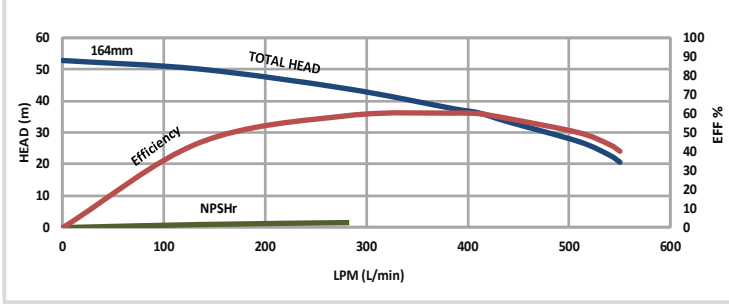
GMP541 60Hz



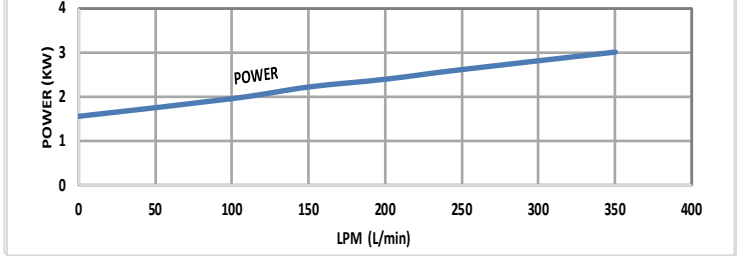
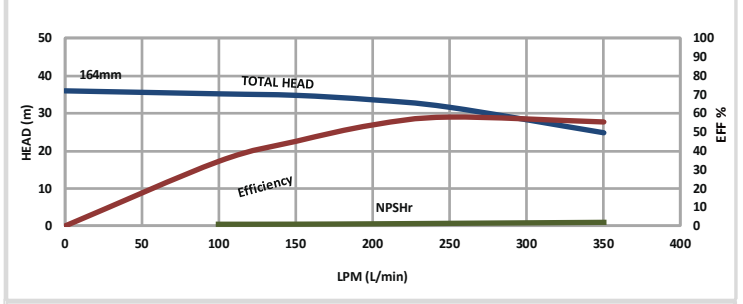
GMP541 50Hz



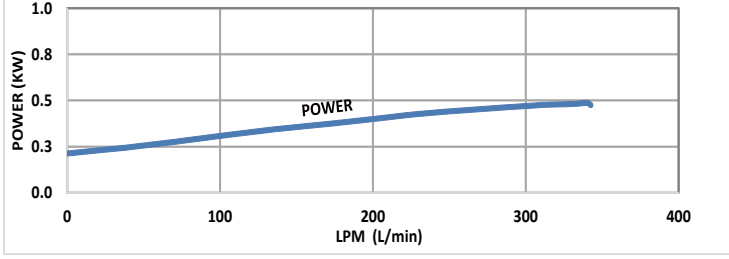
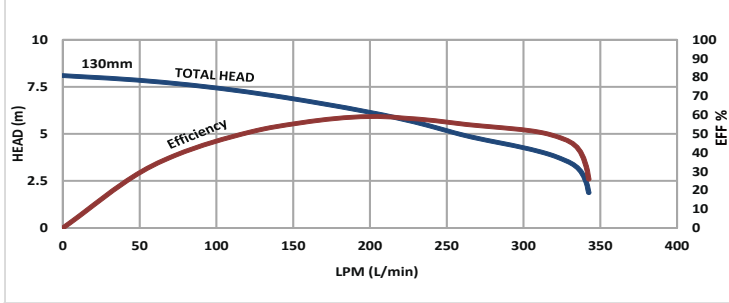
GMP542 60Hz



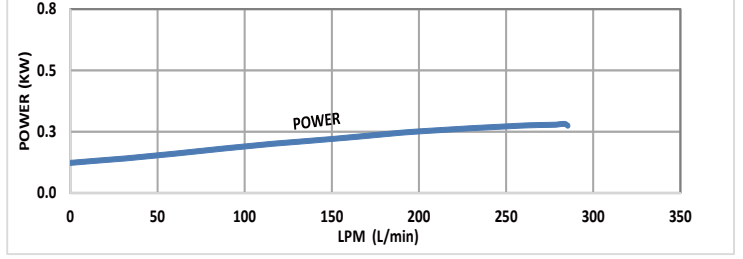
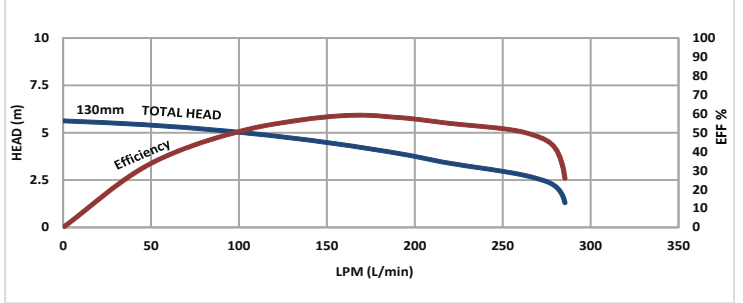
GMP542 50Hz



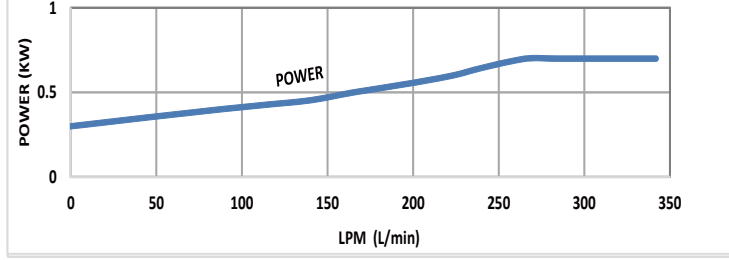
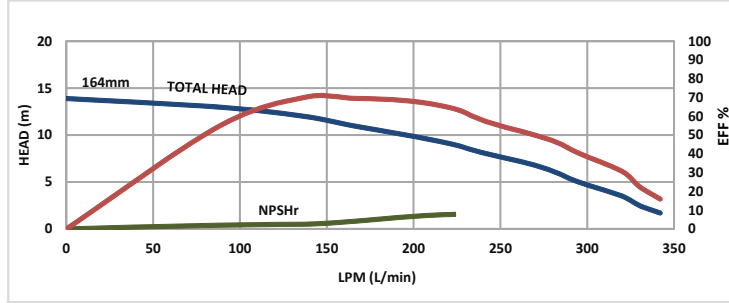
GMP541-4P-1HP-60Hz



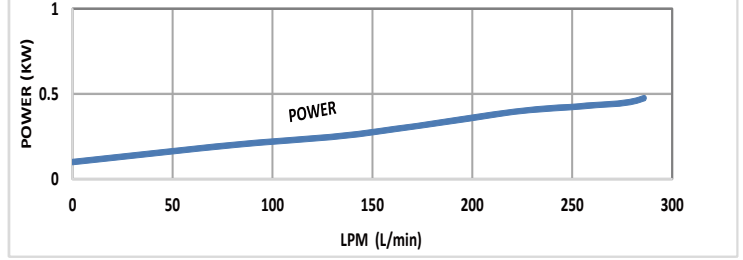
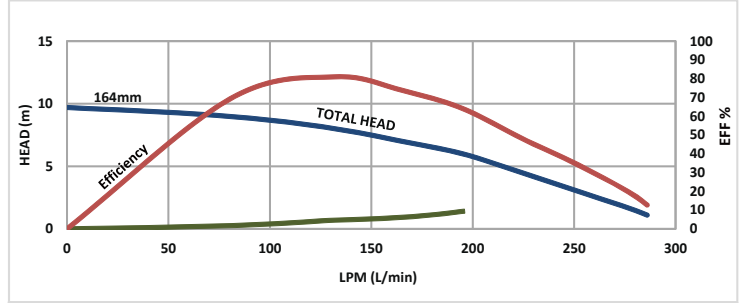
GMP541-4P-1HP-50Hz



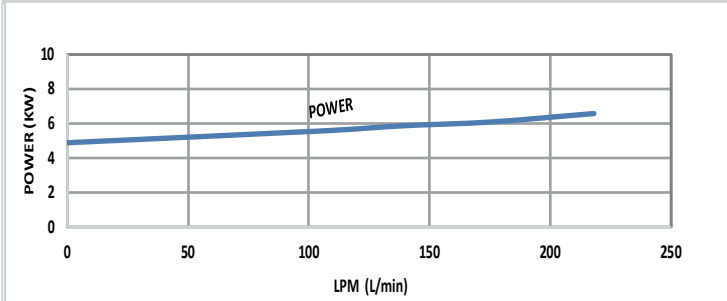
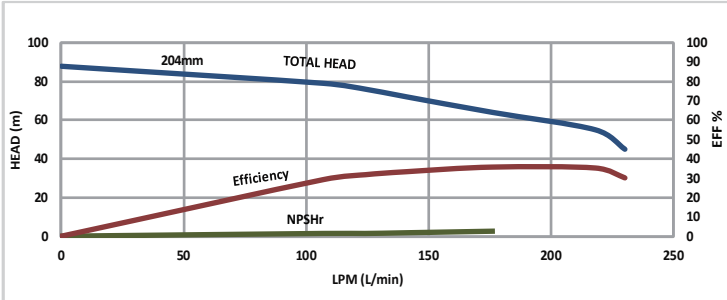
GMP542-4P-1HP-60Hz



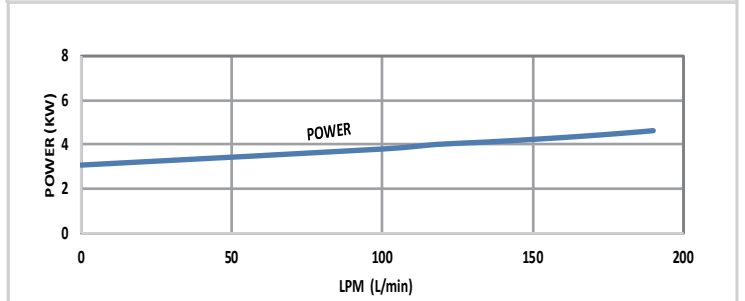
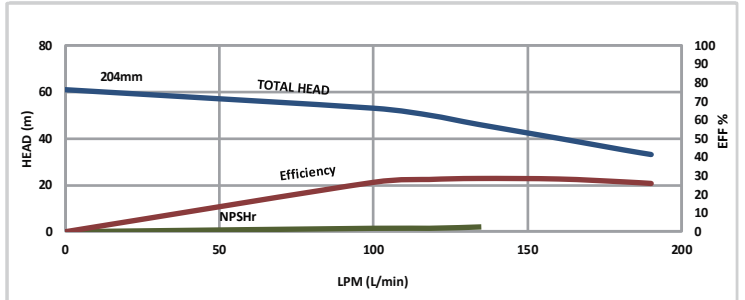
GMP542-4P-1HP-50Hz



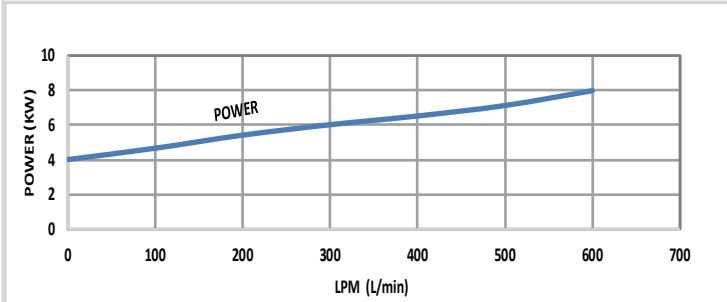
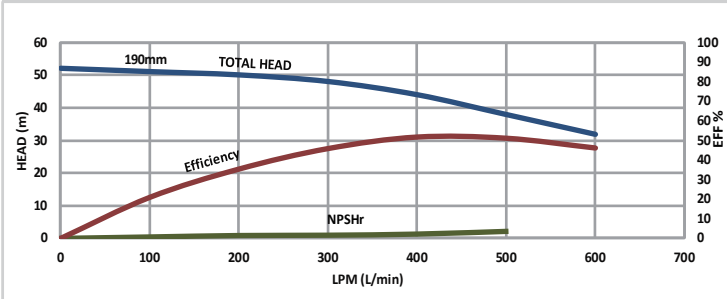
GMP423 60Hz



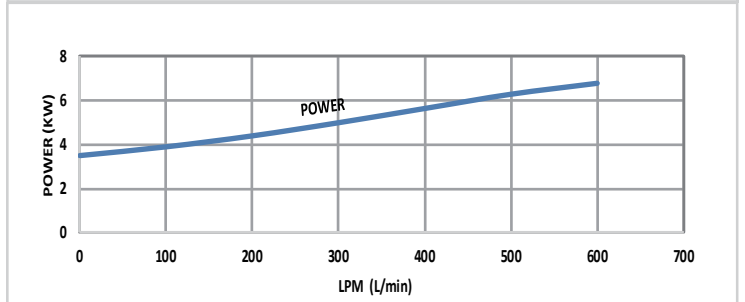
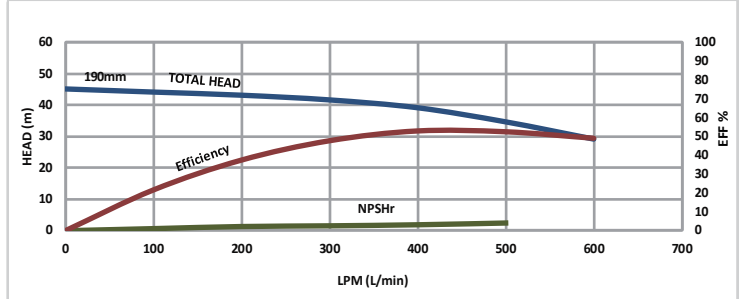
GMP423 50Hz



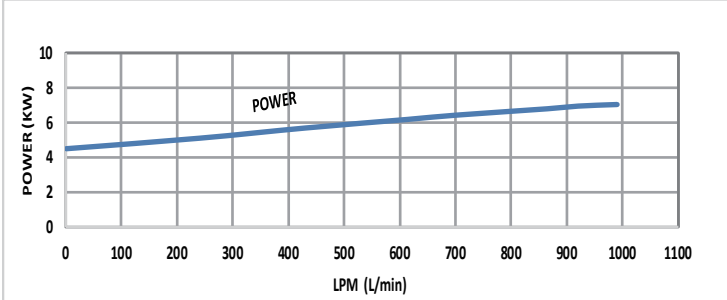
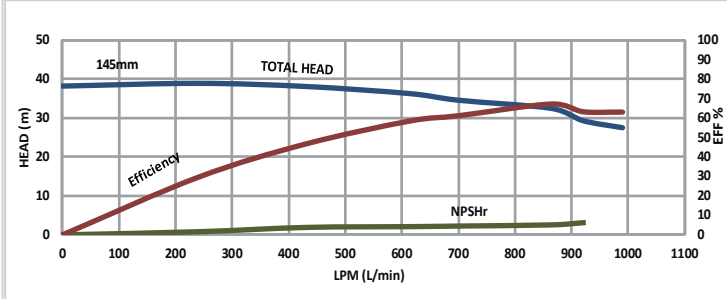
GMP543 60Hz



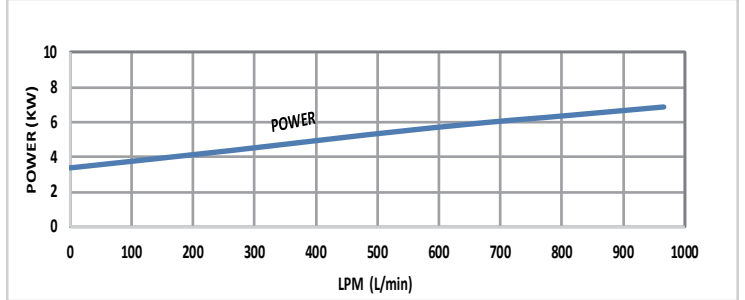
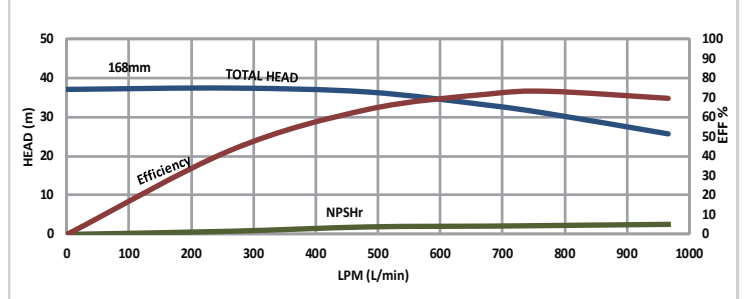
GMP543 50Hz



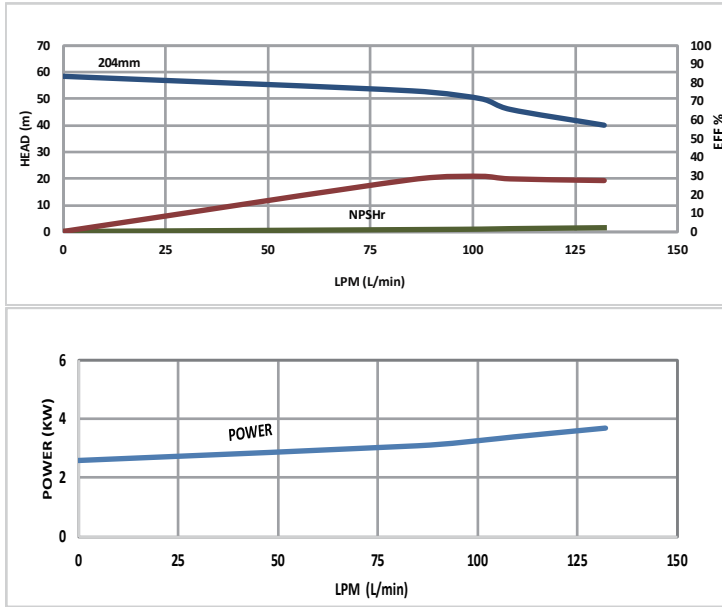
GMP842 60Hz



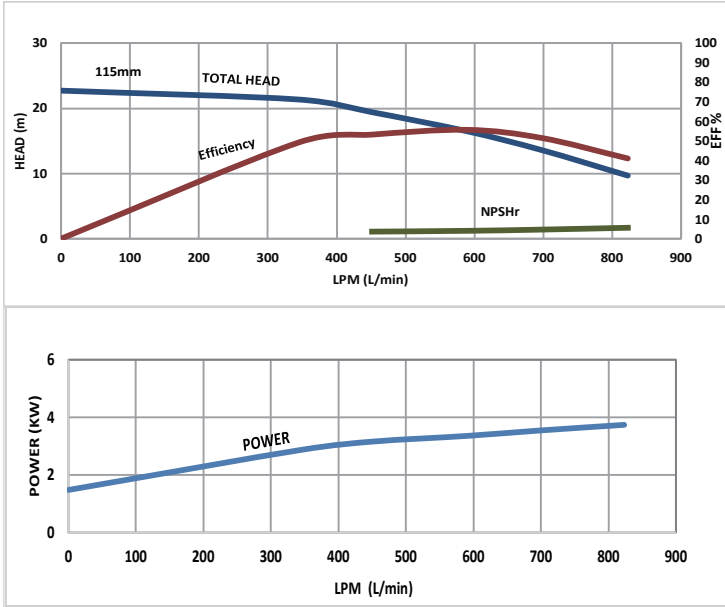
GMP842 50Hz



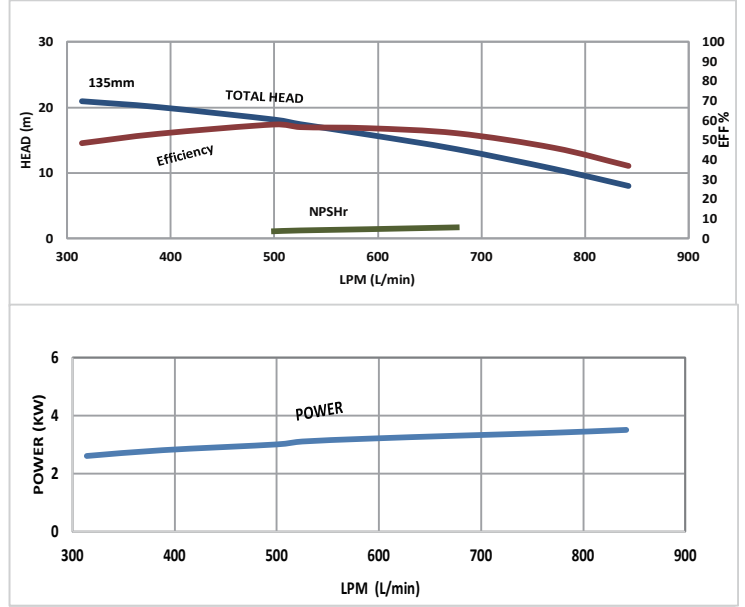
GMP424 50Hz



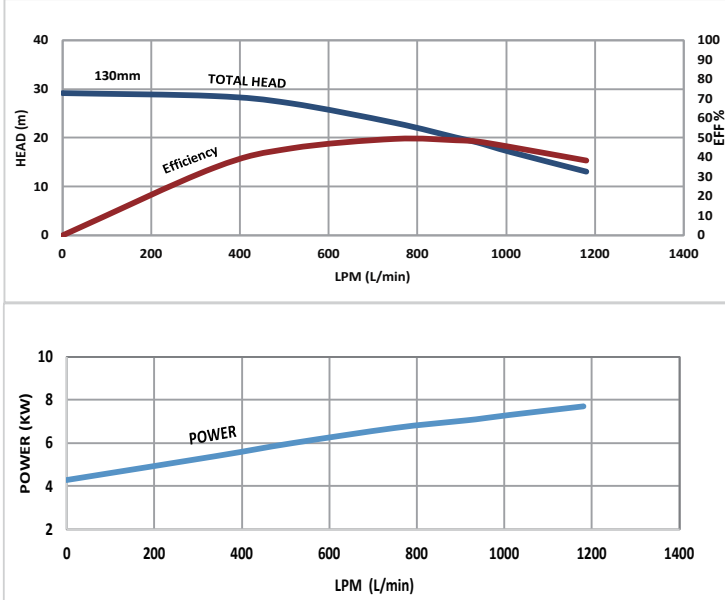
GMP843 60Hz



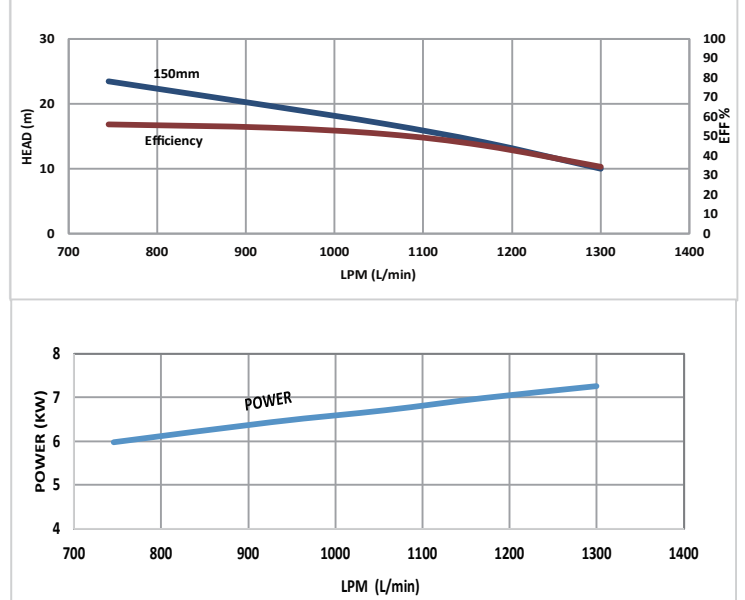
GMP843 50Hz



GMP852 60Hz



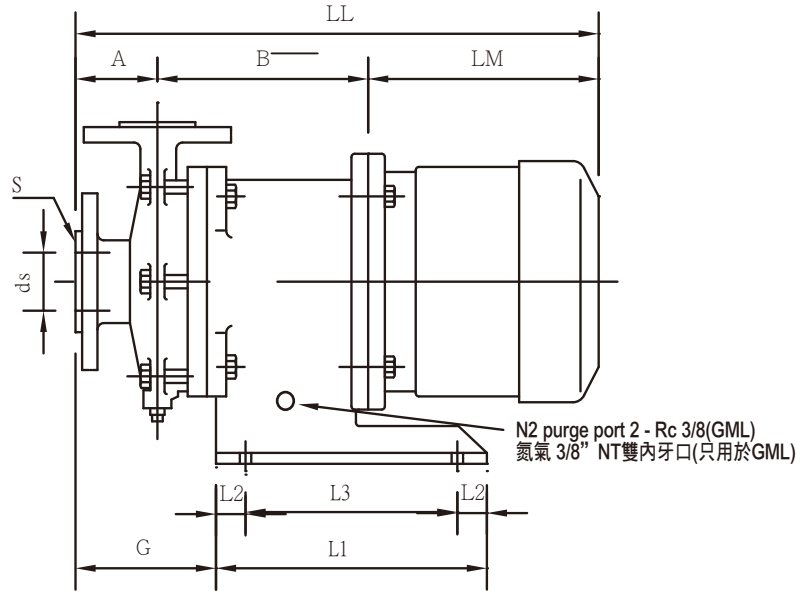
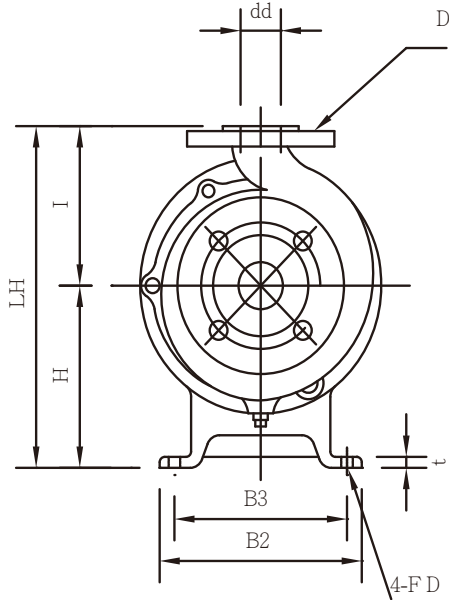
GMP852 50Hz



■ 尺寸 DIMENSIONS
(GMP / GMH / GML)

單位/unit:mm

型號 PUMP SIZE	馬達 MOTOR		進出口 BORE				泵和馬達 PUMP & MOTOR DIMENSION														重量 WEIGHT APPROX (kg)													
			入口 SUCT		出口 DISCH		A	B	H	I	LH	LM	LL	G	L1	L2	L3	B2	B3	t	FD	PUMP	MOTOR	TOTAL										
	框號 FRAME SIZE	輸出 OUT PUT (kw)	口徑 Ds	法蘭 S	口徑 Dd	法蘭 D																												
GMP-210	80M	0.75	25	JIS 10K RF ORASME 150LB RF	20	JIS 10K RF ORASME 150LB RF	75	170	110	105	215	233	478	125	180	30	120	160	130	12	ψ 12	22	17	39										
	90L	1.5					275	520	22	24	46																							
GMP-220-S	80M	0.75	25		JIS 10K RF ORASME 150LB RF		20	JIS 10K RF ORASME 150LB RF	60	170	110 (170)	120	230 (290)	233	463	110	180 (250)	30	120 (190)	160 (200)	130 (160)	20 (18)	ψ 12	23	18	41								
	90L	1.5							275	505	23	25	48																					
GMP-220	80M	0.75	25				JIS 10K RF ORASME 150LB RF		20	JIS 10K RF ORASME 150LB RF	60	170	110 (170)	120	230 (290)	233	463	110	180 (250)	30	120 (190)	160 (200)	130 (160)	12 (18)	ψ 12	23	17	40						
	90L	1.5									275	505	23	24	47																			
GMP-221	90L	1.5,2.2	25						JIS 10K RF ORASME 150LB RF		20	JIS 10K RF ORASME 150LB RF	65	165	170	130	300	275	505	110	250	30	190	200	160	18	ψ 12	27	24	51				
	(100L),112M	(2.2),3.7											175	566	30	46	76																	
GMP-222	90L	1.5,2.2	25								JIS 10K RF ORASME 150LB RF		20	JIS 10K RF ORASME 150LB RF	65	165	170	140	310	275	505	110	250	30	190	200	160	18	ψ 12	29	24	53		
	(100L),112M	(2.2),3.7														175	566	33	46	79														
	132S	5.5														245	212	352	400	710	125									350	50	250	250	200
GMP-420	80M	0.75	40										JIS 10K RF ORASME 150LB RF		25	JIS 10K RF ORASME 150LB RF	75	170	170	135	305	233	478	125	250	30	190	200	160	18	ψ 12	29	17	46
	90L	1.5,2.2																180	520	29	24	53												
	(100L),112M	(2.2),3.7																340	595	29	46	75												
GMP-421	90L	1.5,2.2	40	JIS 10K RF ORASME 150LB RF		25									JIS 10K RF ORASME 150LB RF		75	170	170	135	305	275	520	125	250	30	190	200	160	18	ψ 12	30	24	54
	(100L),112M	(2.2),3.7																180	581	34	46	80												
	132S	5.5			250			212										347	400	725	140	350	50									250	250	200
GMP-541	90L	2.2	50		JIS 10K RF ORASME 150LB RF	40		JIS 10K RF ORASME 150LB RF									80	170	170	140	310	275	525	130	250	30	190	200	160	18	ψ 12	31	24	55
	(100L),112M	(2.2),3.7					180			586								35	46	81														
	132S	5.5					250			212								352	400	730	145	350	50									250	250	200
GMP-542	90L	2.2	50			JIS 10K RF ORASME 150LB RF	40		JIS 10K RF ORASME 150LB RF	65		165					170	150	320	275	505	110	250	30	190	200	160	18	ψ 12	34	24	58		
	(100L),112M	(2.2),3.7										175					566	38	46	84														
	132S	5.5									245	212		362			400	710	125	350	50									250	250	200	ψ 15	49



單位/unit:mm

型號 PUMP SIZE	馬達 MOTOR		進出口 BORE				泵和馬達 PUMP & MOTOR DIMENSION														重量 WEIGHT APPROX (kg)			
			入口 SUCT		出口 DISCH		A	B	H	I	LH	LM	LL	G	L1	L2	L3	B2	B3	t	FD	PUMP	MOTOR	TOTAL
	框號 FRAME SIZE	輸出 OUT PUT (kw)	口徑 Ds	法蘭 S	口徑 Dd	法蘭 D																		
GMP-423	132S	5.5,7.5	40	JIS 10K RF ORASME 150LB RF	25	JIS 10K RF ORASME 150LB RF	102	234	180	165	345	393	729	125	350	25	300	290	250	18	ψ 15	63	68	131
GMP-543	132S	5.5,7.5	50		40		102	234	180	165	345	393	729	125	350	25	300	290	250	18	ψ 15	65	68	133
GMP-842	132S	5.5,7.5	80		40		102	234	180	165	345	393	729	125	350	25	300	290	250	18	ψ 15	67	68	135
GMP-424	112M	3.7	40		25		102	188	170	165	335	355	645	160	250	30	190	200	160	20	ψ 12	43	46	89
GMP-843	112M	3.7	80		40		102	188	170	165	335	355	645	160	250	30	190	200	160	20	ψ 12	51	46	97
GMP-852	132S,M	7.5	80		50		102	239	180	210	390	400	741	130	350	25	300	290	250	18	ψ 15	68	68	136

※ LM,LL dimensions and motor weight way vary depending on motor used。LM與LL尺寸與重量會依廠牌不同而改變。

※ Figures in brackets are for MH220 and ML220。(括弧)內為MH220,ML220的尺寸標示。

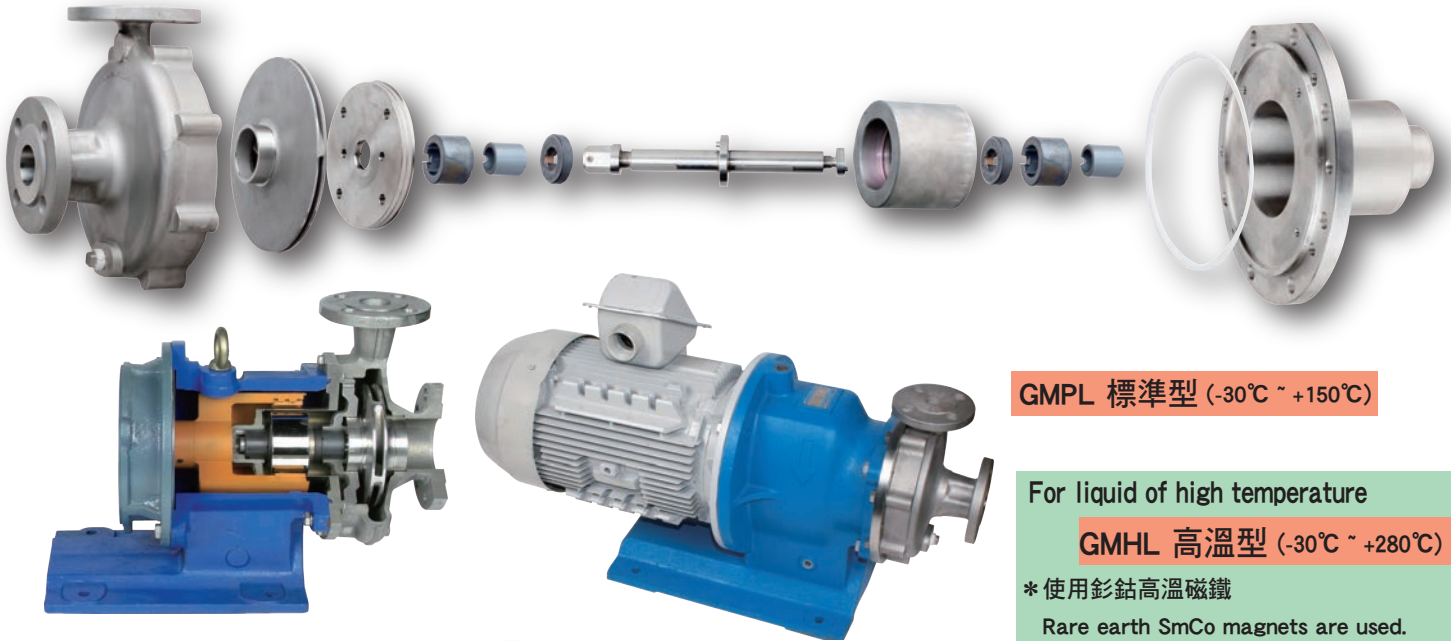
※ This motor size and weight, begin TECO motor as the basis。此表馬達尺寸與重量,皆以東元馬達為依據。

GMPL

5.5kW~18kW

大型金屬磁力泵浦

LARGE-SIZE STAINLESS STEEL MAGNET DRIVE PUMPS



GMPL 標準型 (-30°C ~ +150°C)

For liquid of high temperature

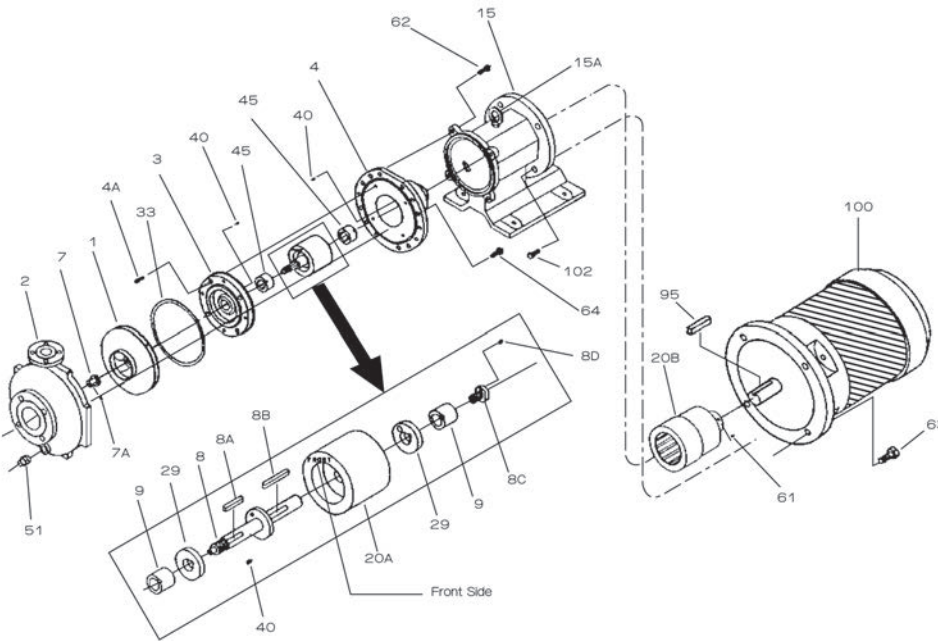
GMHL 高溫型 (-30°C ~ +280°C)

* 使用鈔鈷高溫磁鐵

Rare earth SmCo magnets are used.

* 使用高溫專用石墨墊片。

High temperature gasket material is used.



For liquid of low temperature

GMLL 低溫型 (-80°C ~ +150°C)

* 設置氮氣充填孔,防止低溫下外磁結冰。

Nitrogen purge port is provided to prevent moisture from freezing in the frame adapter.

* 使用稀土性磁鐵。

Rare earth Nd magnets are used.

* 使用低溫專用石墨墊片。

Low temperature gasket material is used.

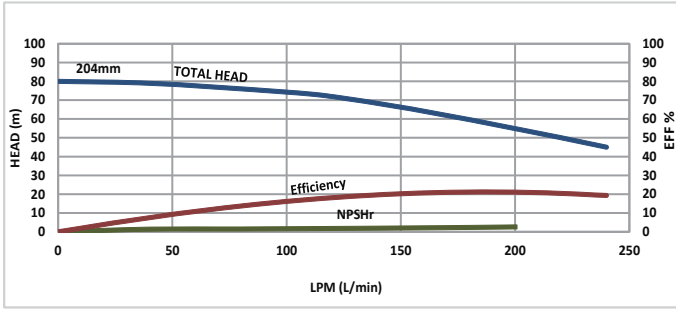
■ 材質表 MATERIALS (GMPL)

編號 MARK	零件名稱 NAME OF PART	中文名稱	材質 MATERIALS	數量 No.REQ'D
1	IMPELLER	葉輪	SCS14	1
2	CASING	前蓋	SCS14	1
3	CASING COVER	後蓋板	SCS14	1
4	REAR CASING	後蓋	SUS316	1
4A	HEXAGON SOCKET HEAD CAP SCREW	後蓋板螺絲	SUS316	4
7	IMPELLER NUT	葉輪螺帽	SCS14	1
7A	IMPELLER NUT SET SCREW	葉輪固定螺絲	SUS316	1
8	SHAFT	軸心	SUS316	1
8A	IMPELLER KEY	葉輪固定鍵	SUS316	1
8B	COUPLING KEY (PUMP)	內磁固定鍵	SUS316	1
8C	SLEEVE BOLT	軸心後螺絲	SUS316	1
8D	SLEEVE BOLT SET SCREW	軸心固定螺絲	SUS316	1
9	SLEEVE	軸心襯套	SSiC	2
15	FRAME ADAPTER	馬達座	FC200	1
15A	EYE BOLT	單眼螺絲	SF440	1
20A	MAGENT COUPLING (PUMP)	內磁	SUS316	1

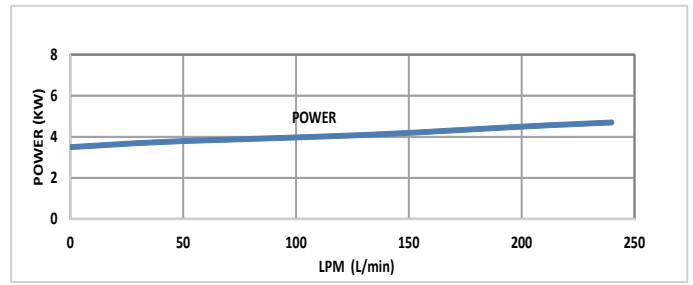
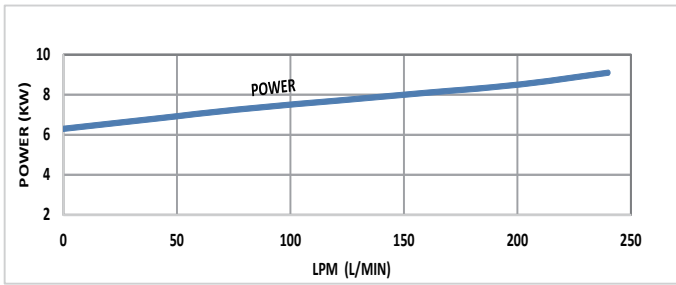
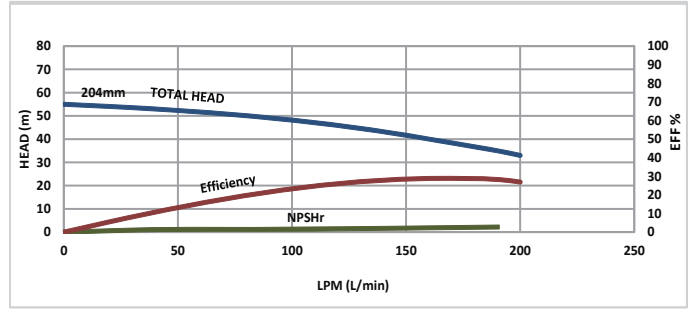
編號 MARK	零件名稱 NAME OF PART	中文名稱	材質 MATERIALS	數量 No.REQ'D
20B	MAGENT COUPLING (MOTOR)	外磁	FCD	1
29	THRUST RING	止推環	SSiC	2
33	SHEET GASKET	前蓋墊片	MP:PTFE MH/ML: 石墨	1
40	SET SCREW	襯套止動螺絲	SUS316	3
45	BUSHING	軸受	SSiC	2
51	PLUG	洩水螺絲	SUS316	1
61	SET SCREW	外磁固定螺絲	SCM435	1
62	HEXAGON HEAD BOLT (PUMP)	泵頭鎖附螺絲	SS400	8
63	HEXAGON HEAD BOLT (MOTOR)	馬達鎖附螺絲	SS400	4
64	HEXAGON HEAD BOLT (CASING)	前蓋固定螺絲	SUS304	4
95	COUPLING KEY (MOTOR)	馬達鍵	S45C	1
100	MOTOR	馬達	—	1
102	BOLT	螺絲	SUS304	4

性能曲線 PERFORMANCE CURVE:

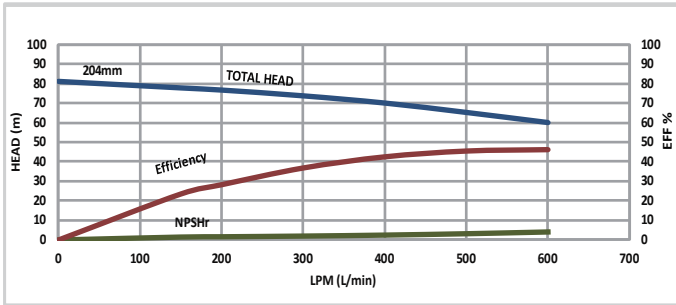
GMPL4220LF 60Hz



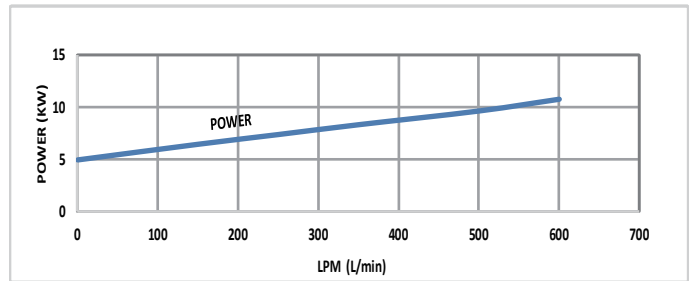
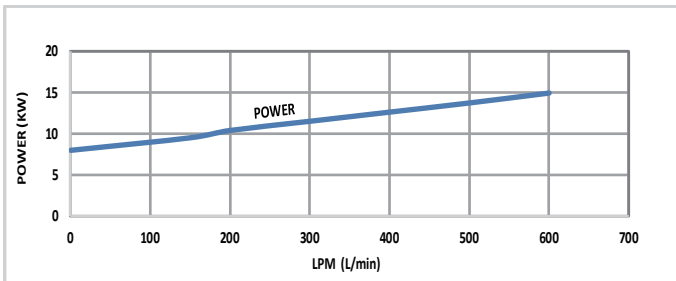
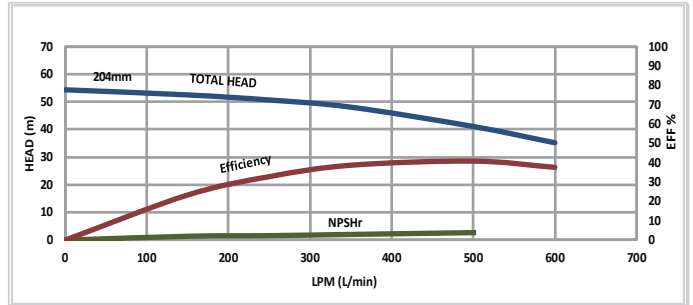
GMPL4220LF 50Hz



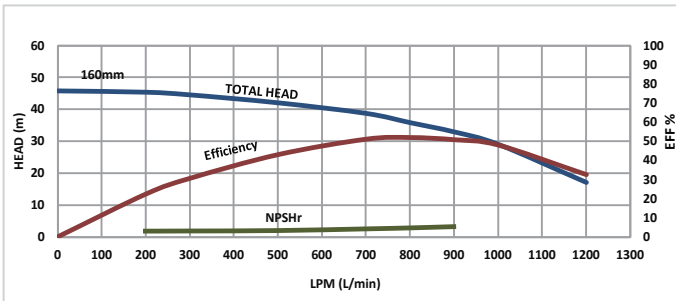
GMPL4220 60Hz



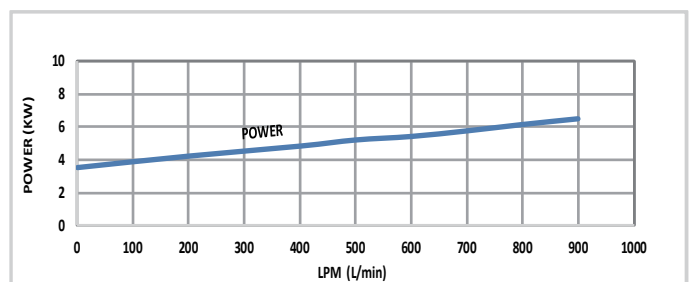
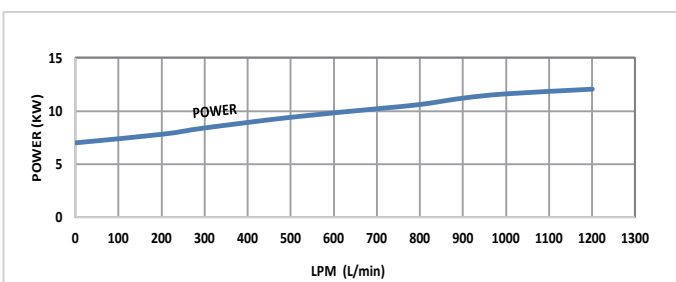
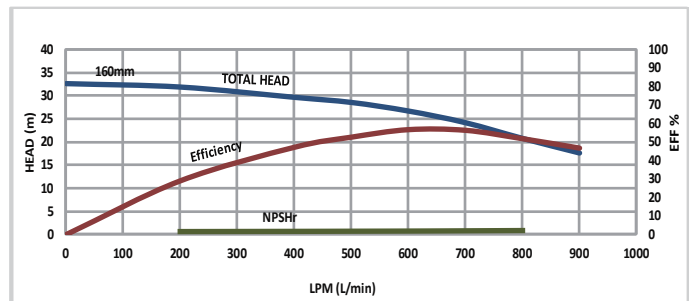
GMPL4220 50Hz



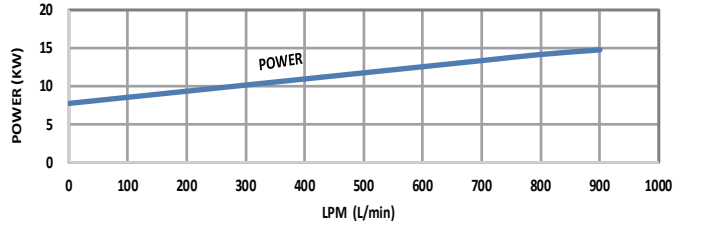
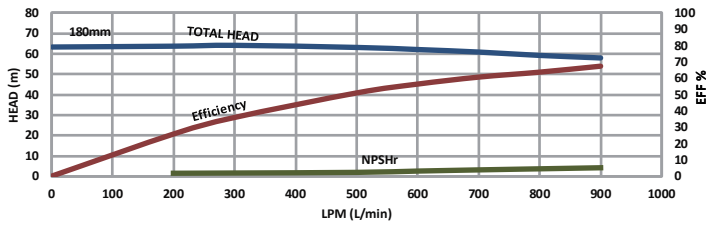
GMPL8415 60Hz



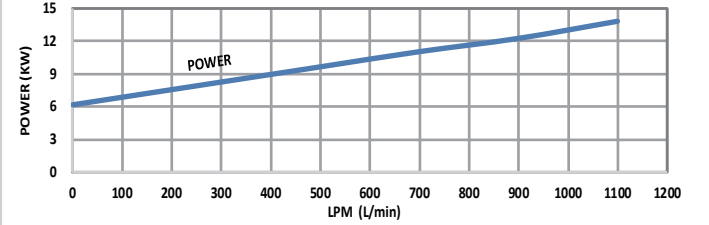
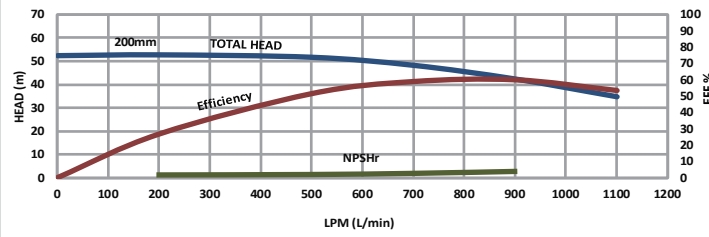
GMPL8415 50Hz



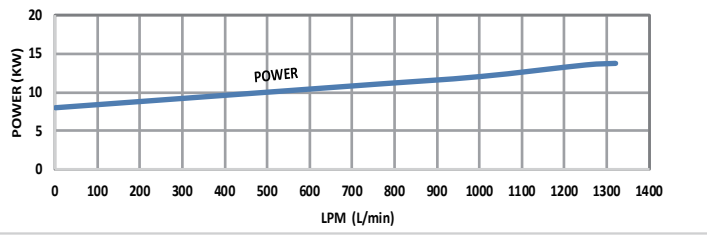
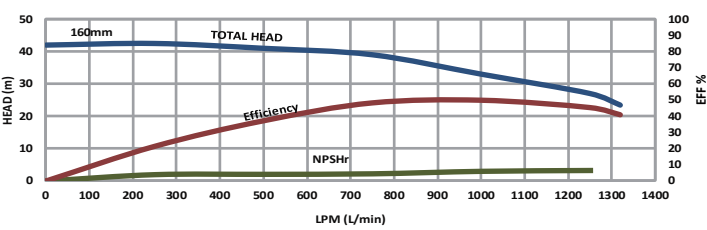
GMPL8420 60Hz



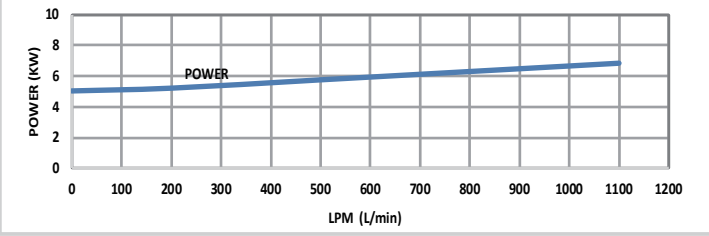
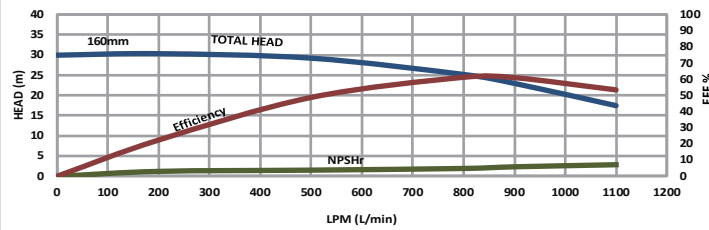
GMPL8420 50Hz



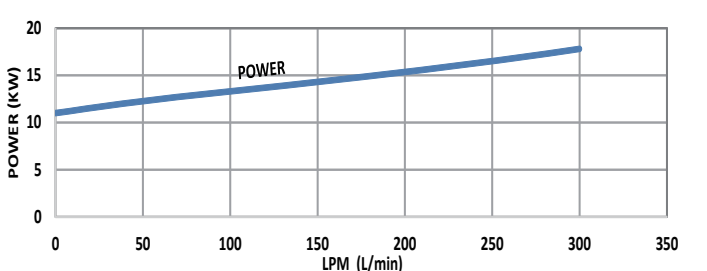
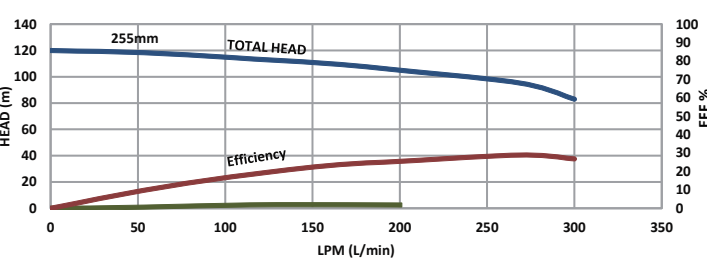
GMPL8515 60Hz



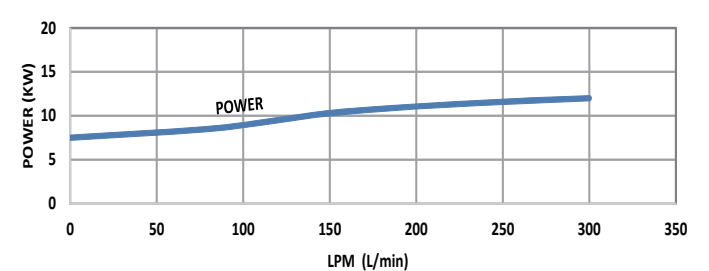
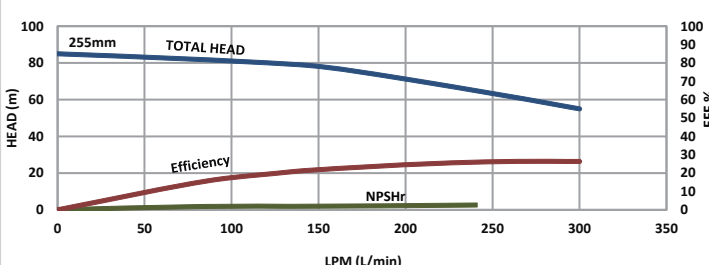
GMPL8515 50Hz



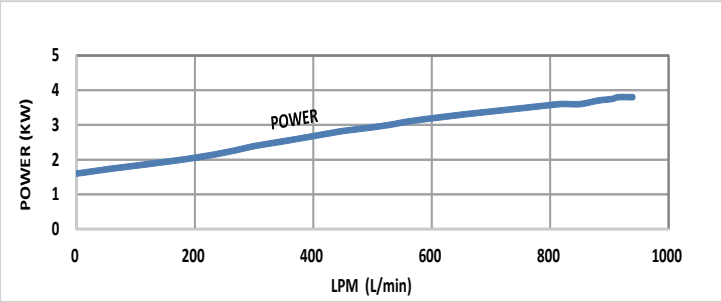
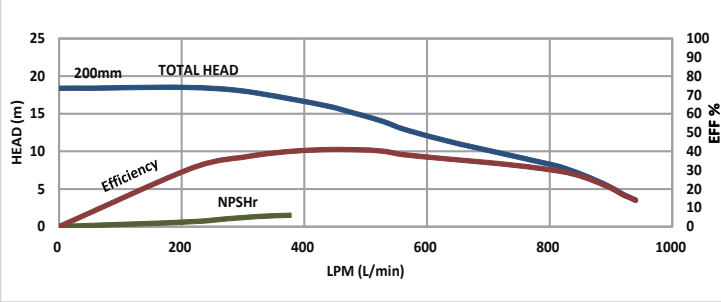
GMPL5225LF 60Hz



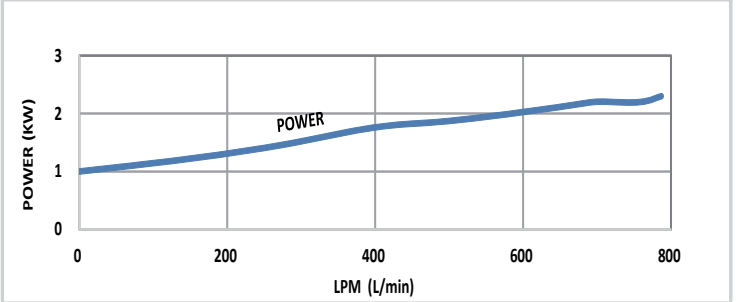
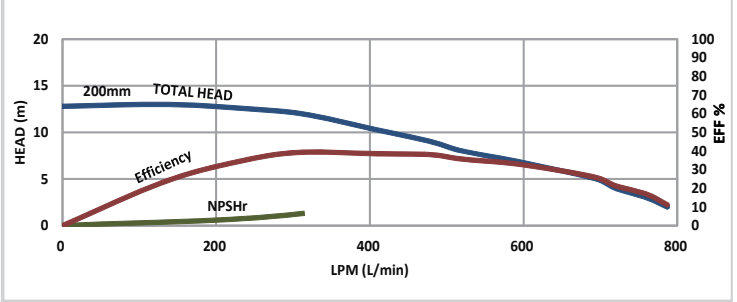
GMPL5225LF 50Hz



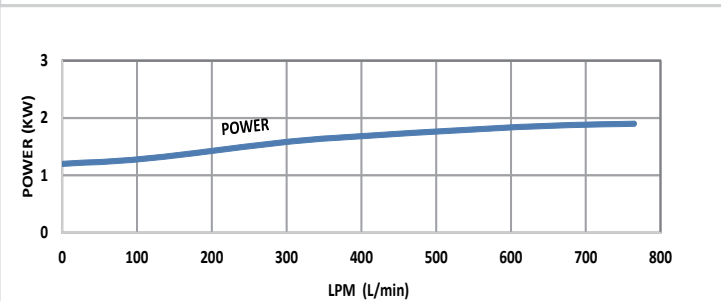
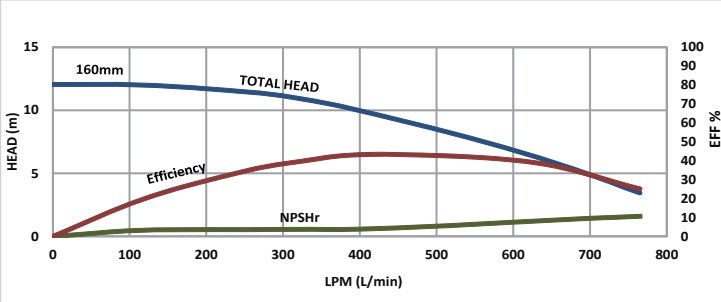
GMP8420-4P-5HP-60Hz



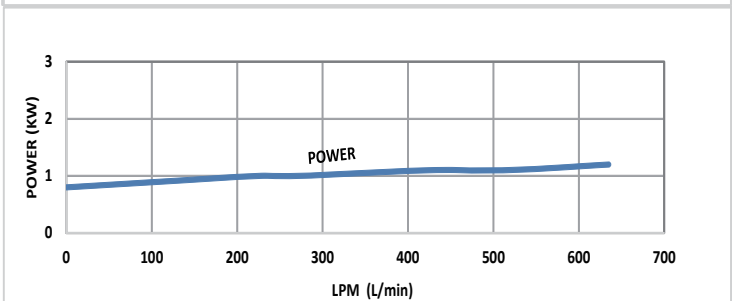
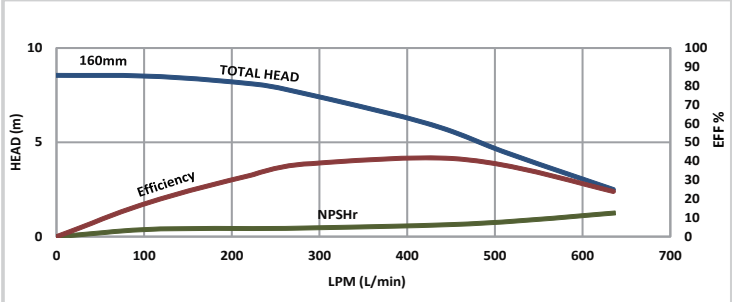
GMP8420-4P-5HP-50Hz



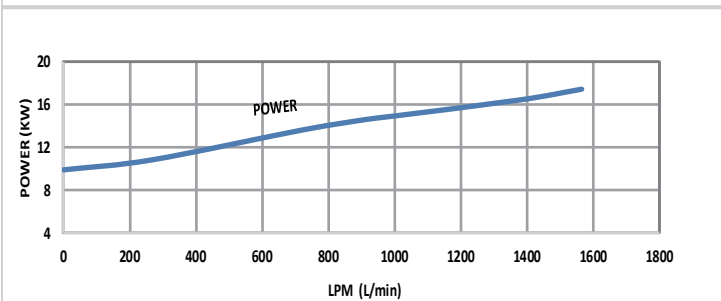
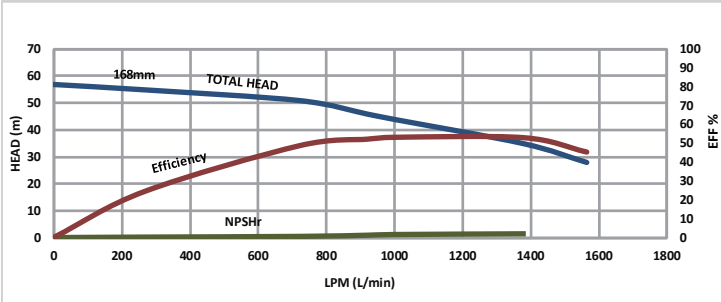
GMP8515-4P-5HP-60Hz



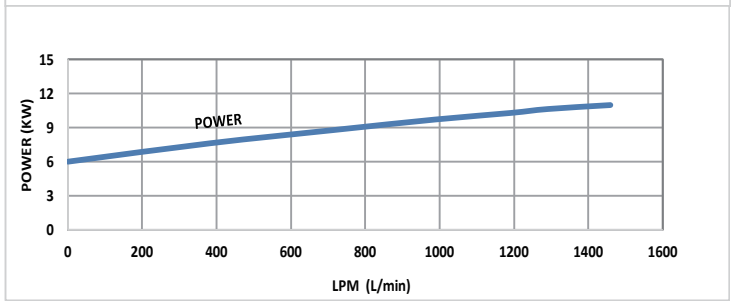
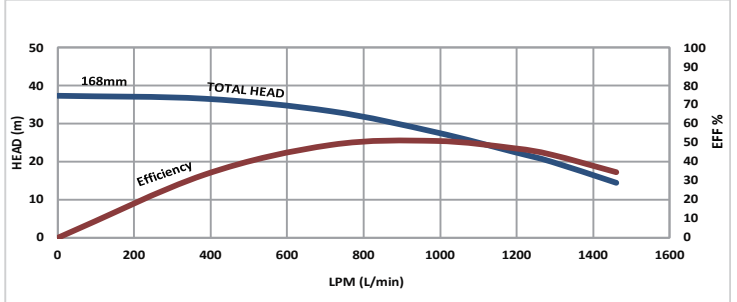
GMP8515-4P-5HP-50Hz



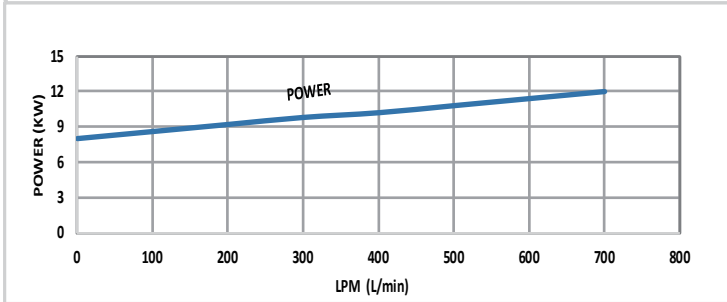
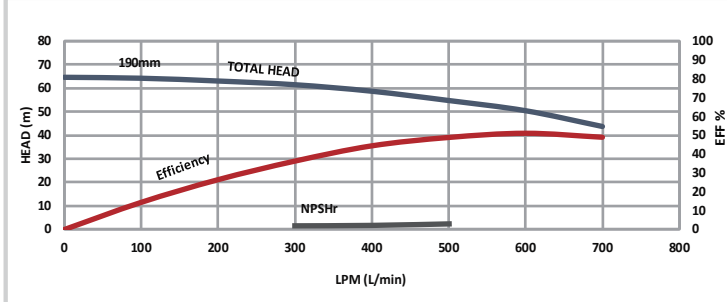
8515L 60Hz



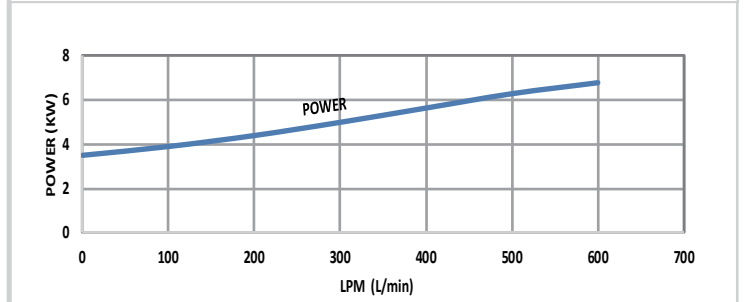
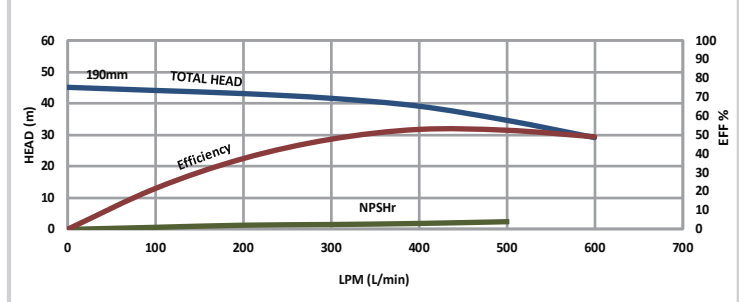
8515L 50Hz



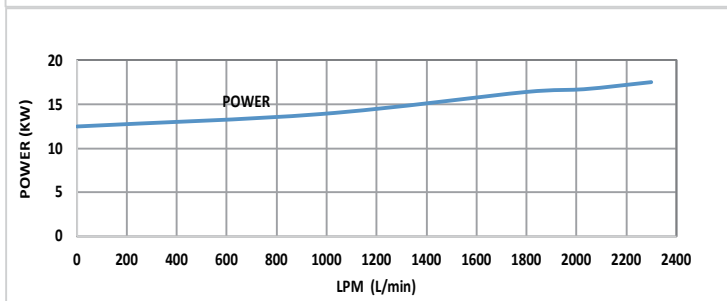
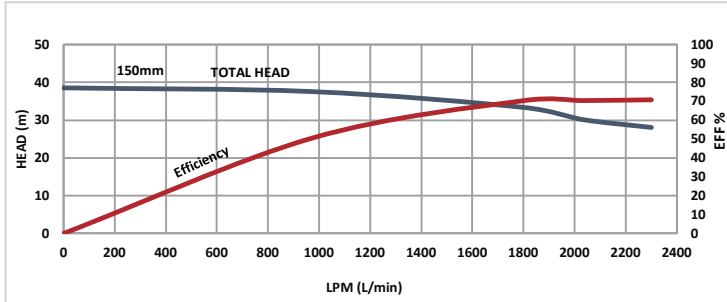
GMP5430-60Hz



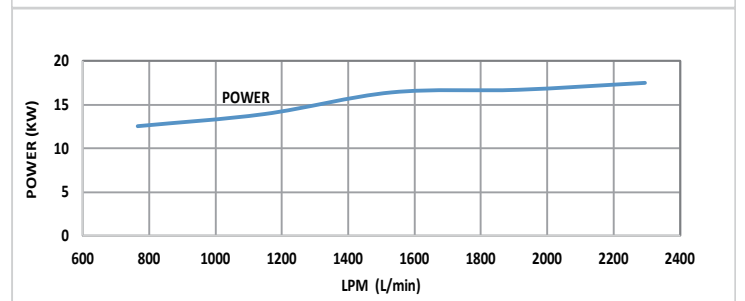
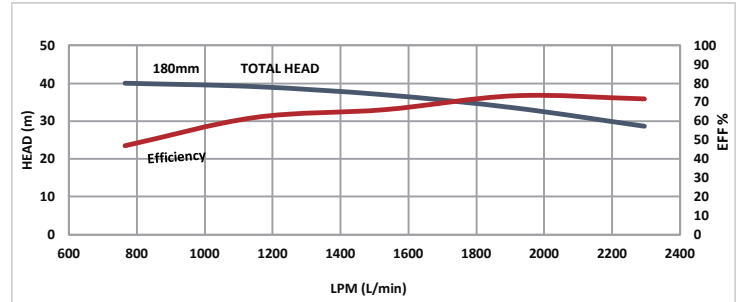
GMP5430-50Hz



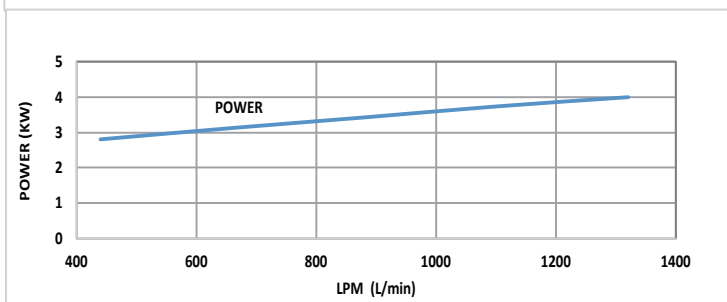
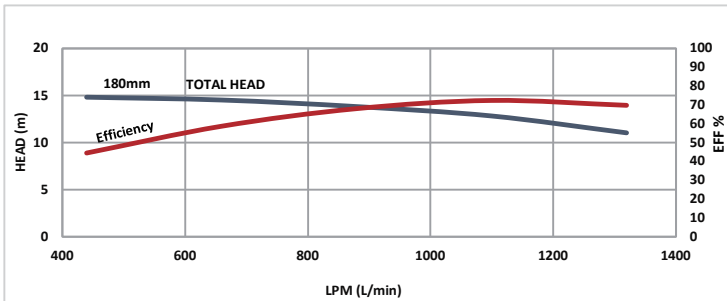
GMPL 10820-L-2P-60Hz



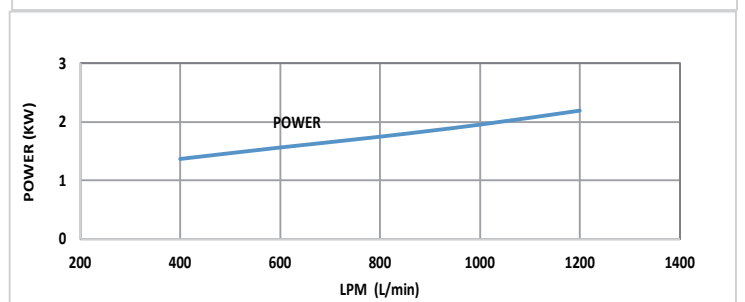
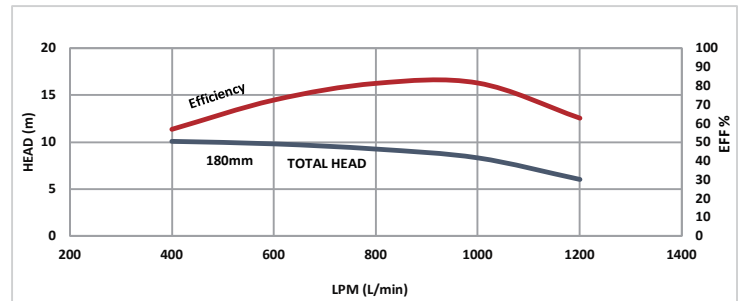
GMPL 10820-L-2P-50Hz



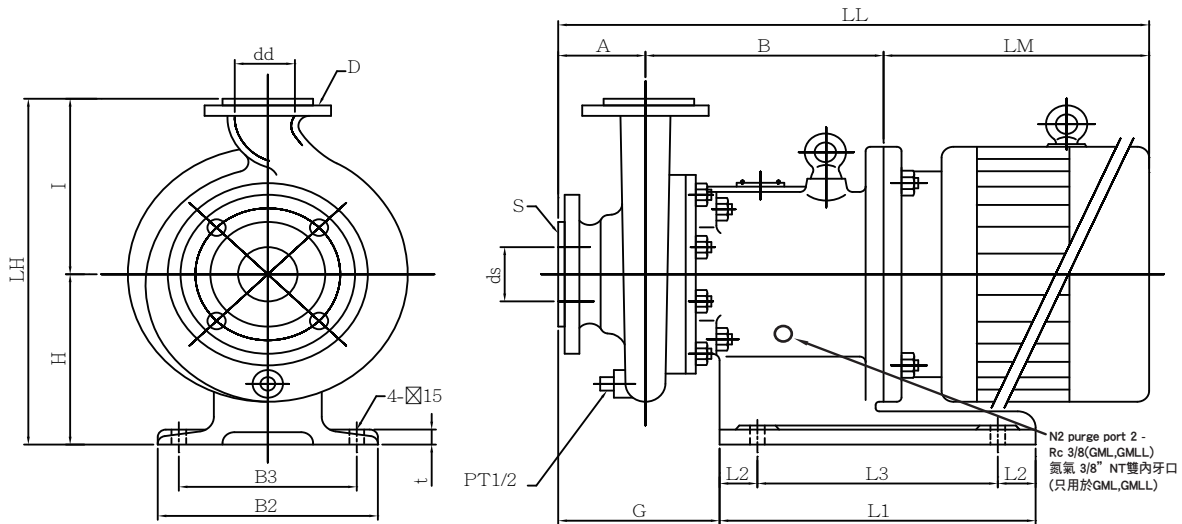
GMPL 10820-L-4P-60Hz



GMPL 10820-L-4P-50Hz



■尺寸 DIMENSIONS (GMPL)



單位/unit:mm

型號 PUMP SIZE	馬達 MOTOR		進出口 BORE				泵和馬達 PUMP & MOTOR DIMENSION														重量 WEIGHT APPROX (kg)			
	框號 FRAME SIZE	輸出 OUT PUT (kw)	入口 SUUCT		出口 DISCH		A	B	H	I	LH	LM	LL	G	L1	L2	L3	B2	B3	t	FD	PUMP	MOTOR	TOTAL
			口徑 Ds	法蘭 S	口徑 Dd	法蘭 D																		
GMPL-4220LF	112M	2.2	40	25	102	258	212	165	377	275	635	175	350	50	250	250	200	20	ψ 15	68	24	92		
	112M	3.7																		68	46	114		
	132S,M	5.5 , 7.5																		70	68	138		
	160M,L	11 , 15																		86	125	211		
	160L	18.5																		86	148	234		
GMPL-4220	112M	2.2	40	25	102	258	212	165	377	275	635	175	350	50	250	250	200	20	ψ 15	68	24	92		
	112M	3.7																		68	46	114		
	132S,M	5.5 , 7.5																		70	68	138		
	160M,L	11 , 15																		86	125	211		
	160L	18.5																		86	148	234		
GMPL-8415	112M	2.2	80	40	102	258	212	165	377	275	635	175	350	50	250	250	200	20	ψ 15	72	24	96		
	112M	3.7																		72	46	118		
	132S,M	5.5 , 7.5																		74	68	142		
	160M,L	11 , 15																		90	125	215		
	160L	18.5																		90	148	238		
GMPL-8420	112M	2.2	80	40	102	263	212	215	427	275	640	180	350	50	250	250	200	20	ψ 15	74	24	98		
	112M	3.7																		74	46	120		
	132S,M	5.5 , 7.5																		76	68	144		
	160M,L	11 , 15																		92	125	217		
	160L	18.5																		92	148	240		
GMP-5430	112M	3.7	50	40	102	263	212	165	427	355	720	180	350	50	250	250	200	20	ψ 15	74	46	120		
	132S,M	5.5 , 7.5																		76	68	144		
	160M,L	11 , 15																		92	125	217		
GMPL-8515	112M	2.2	80	50	102	263	212	210	422	275	640	180	350	50	250	250	200	20	ψ 15	74	24	98		
	112M	3.7																		74	46	120		
	132S,M	5.5 , 7.5																		76	68	144		
	160M,L	11 , 15																		92	125	217		
	160L	18.5																		92	148	240		
GMPL-5225LF	112M	2.2	50	25	102	263	212	215	427	275	640	180	350	50	250	250	200	20	ψ 15	84	24	108		
	112M	3.7																		84	46	130		
	132S,M	5.5 , 7.5																		86	68	154		
	160M,L	11 , 15																		102	125	227		
	160L	18.5																		102	148	250		
8515L	112M	2.2	80	50	102	263	212	210	422	275	640	180	350	50	250	250	200	20	ψ 15	74	24	98		
	112M	3.7																		74	46	120		
	132S,M	5.5 , 7.5																		76	68	144		
	160M,L	11 , 15																		92	125	217		
	160L	18.5																		92	148	240		
GMPL 10820-L	112M	3.7	100	80	102	282	212	200	412	355	739	195	350	50	250	250	200	20	ψ 15	74	46	120		
	132S,M	5.5 , 7.5																		76	68	144		
	160L	18.5																		92	148	240		

※ LM,LL dimensions and motor weight way vary depending on motor used。 LM與LL尺寸與重量會依廠牌不同而改變。

※ This motor size and weight, begin TECO motor as the basis。 此表馬達尺寸與重量,皆以東元馬達為依據。

※ 3HP motor is 4 poles。 3HP為4極馬達。

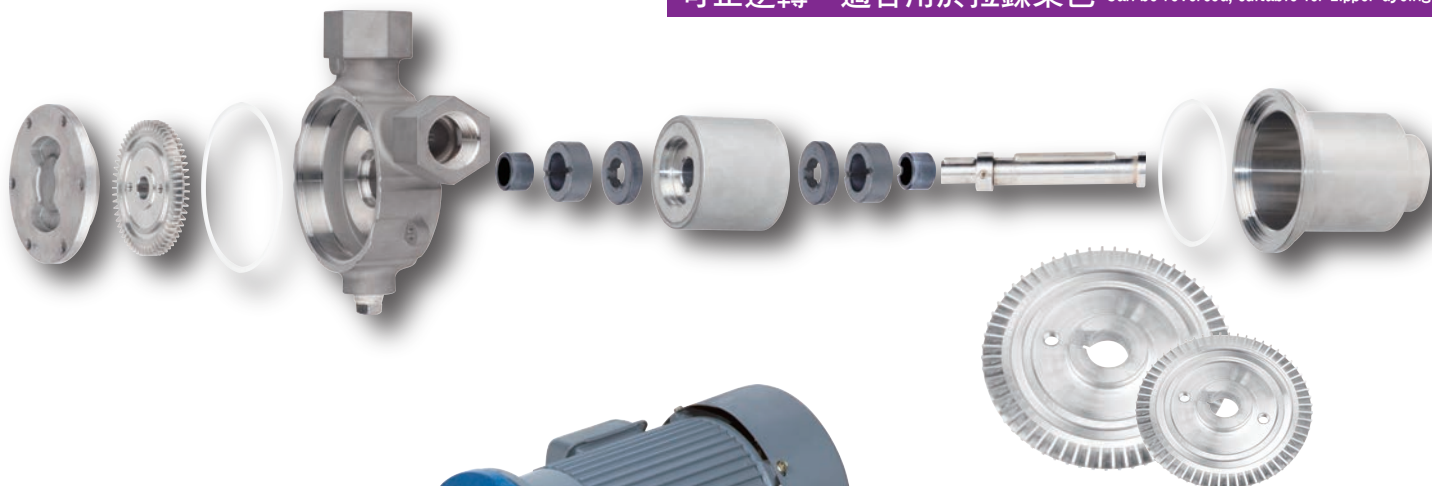
GMSW

0.75kW~3.7kW

316不鏽鋼高揚程低流量摩擦式無軸封泵浦

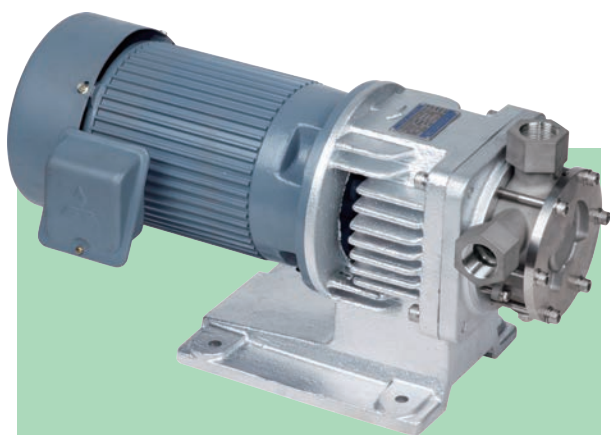
STAINLESS STEEL REGENERATIVE TURBINE VANE MAGNET DRIVE PUMPS

可正逆轉，適合用於拉鍊染色 Can be reversed, suitable for zipper dyeing



標準型GMSW (-30°C ~ +150 °C)

Standard



For liquid of high temperature

高溫型GMHW (-30 °C ~ +280 °C)

* 馬達座有散熱設計。

Fin type frame adapter dissipates heat away from pump.

* 使用釷鈷高溫磁鐵

Rare earth SmCo magnets are used.

* 使用高溫專用石墨墊片。

High temperature gasket material is used.



For liquid of low temperature

低溫型GMLW (-80°C ~ +150 °C)

* 設置氮氣充填孔,防止低溫下外磁結冰。

Nitrogen purge port is provided to prevent moisture from freezing in the frame adapter.

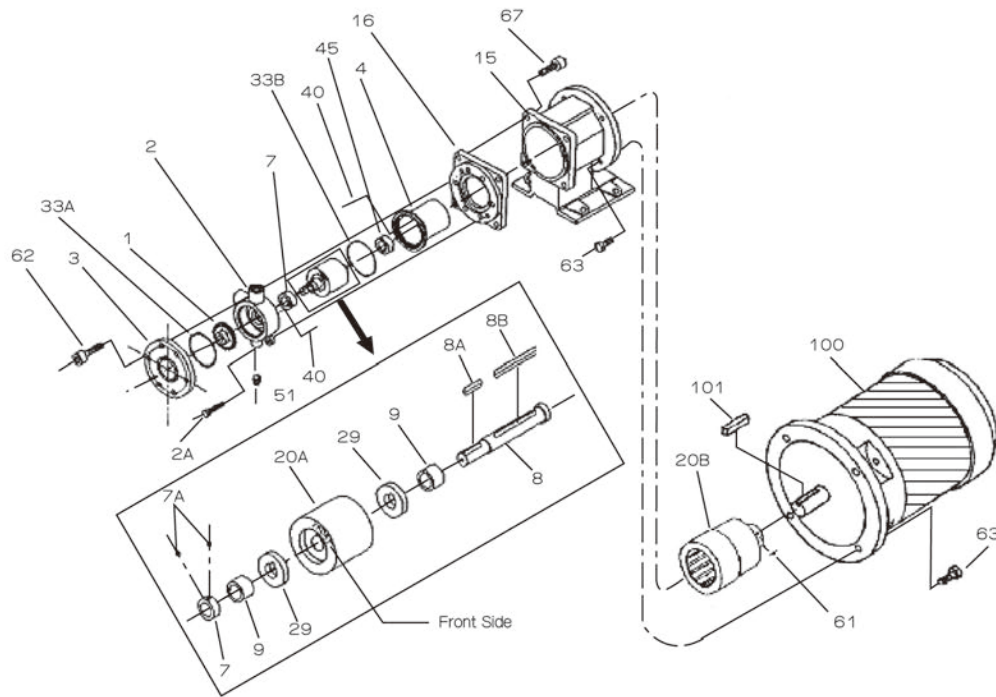
* 使用稀土性磁鐵。

Rare earth Nd magnets are used.

* 使用低溫專用石墨墊片。

Low temperature gasket material is used.

■ 材質 MATERIAL (GMSW)

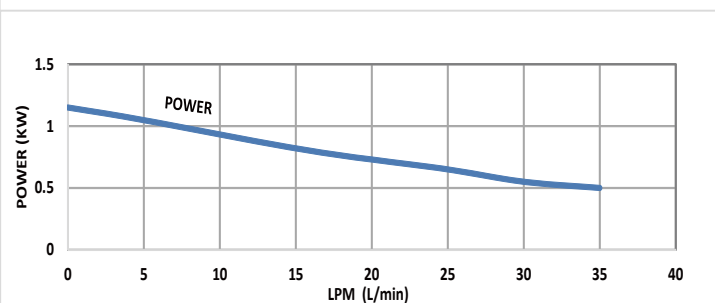
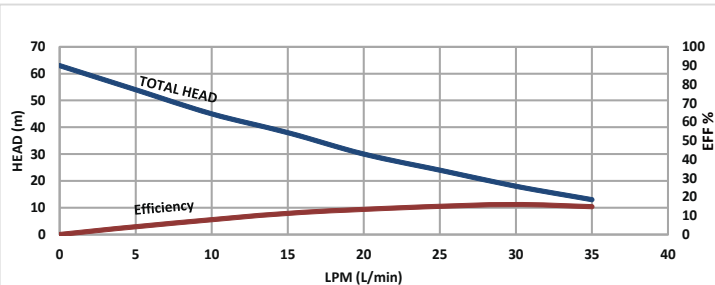


編號 MARK	零件名稱 NAME OF PART	中文名稱	材質 MATERIALS	數量 No.REQ'D
1	IMPELLER	葉輪	SCS14	1
2	CASING	前蓋	SCS14	1
2A	CASING BOLTS	前蓋螺絲	SUS304	2
3	CASING COVER	前蓋板	SCS14	1
4	REAR CASING	後蓋	SUS316	1
7	SET RING	固定環	SUS316	1
7A	SET SCREW	外磁固定螺絲	SUS316	2
8	SHAFT	軸心	SUS316	1
8A	IMPELLER KEY	葉輪固定鍵	SUS316	1
8B	COUPLING KEY (PUMP)	內磁固定鍵	SUS316	1
9	SLEEVE	軸心襯套	SSiC	2
15	FRAME ADAPTER	馬達座	FC200	1
16	FLANGE (CASING)	泵頭固定框架	SUS304	1
20A	MAGNET	內磁	RARE EARTH	1
	MAGNET COUPLING (PUMP)		SUS316	1

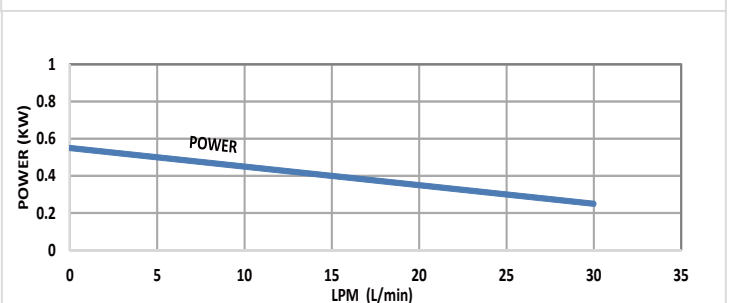
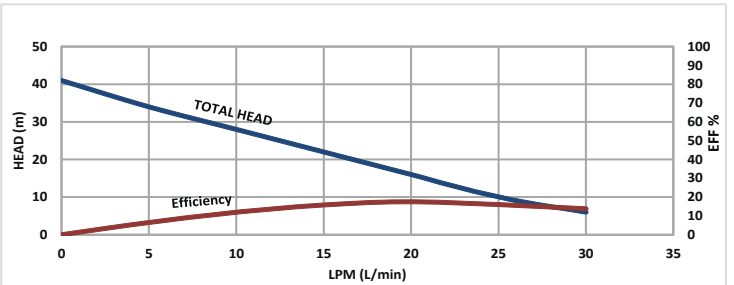
編號 MARK	零件名稱 NAME OF PART	中文名稱	材質 MATERIALS	數量 No.REQ'D
20B	MAGENT	外磁	RARE EARTH	1
	MAGNET COUPLING (MOTOR)		SS400	1
29	THRUST RING	止推環	SSiC	2
33A	O RING	O環	PTFE	1
33B	O RING	O環	PTFE	1
40	PIN	襯套止動螺絲	SUS316	2
45	BUSHING	軸受	SSiC	2
51	PLUG	洩水螺絲	SUS316	1
61	SET SCREW	外磁固定螺絲	SCM435	1
62	HEXAGON SOCKET HEAD CAP SCREW	前蓋螺絲	SUS304	6
63	HEXAGON HEAD BOLT (MOTOR)	馬達鎖附螺絲	SUS304	4
67	HEXAGON SOCKET HEAD CAP SCREW	前蓋鎖附螺絲	SUS304	6
100	MOTOR	馬達	—	1
101	COUPLING KEY (MOTOR)	馬達鍵	S45C	1

■ 性能曲線表 PERFORMANCE CURVES (GMSW)

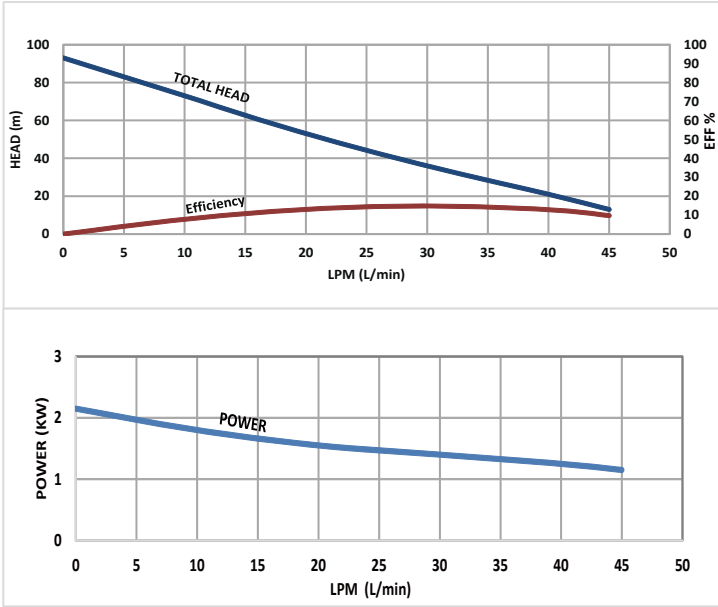
GMSW201 60Hz



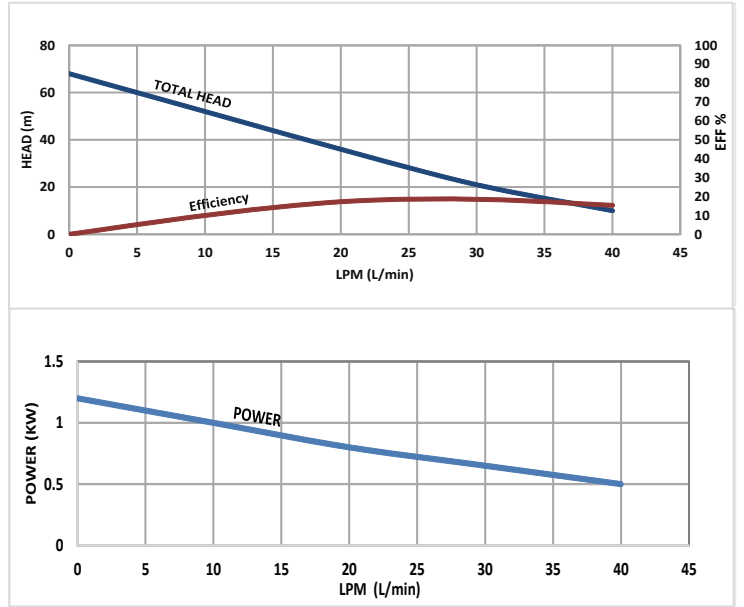
GMSW201 50Hz



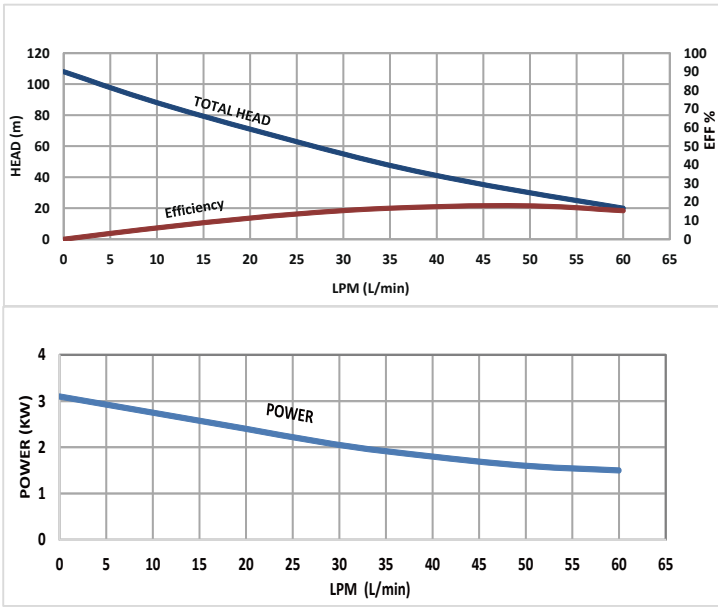
GMSW251 60Hz



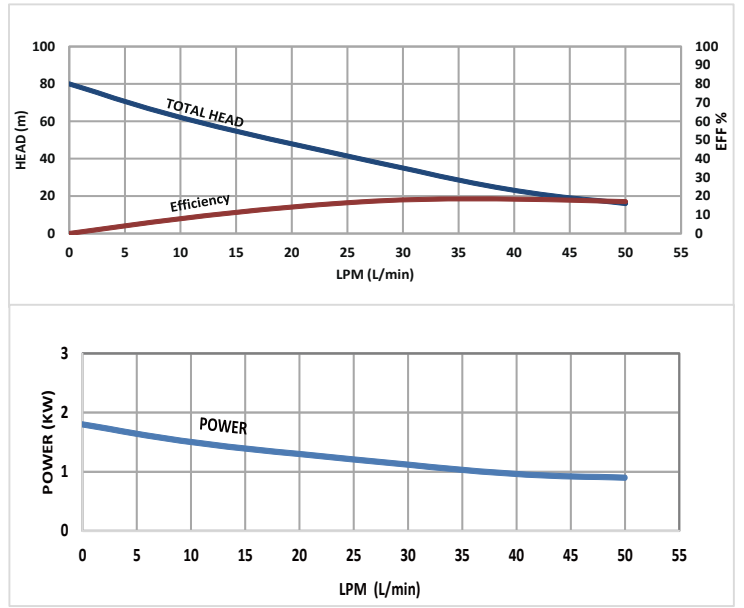
GMSW251 50Hz



GMSW252 60Hz

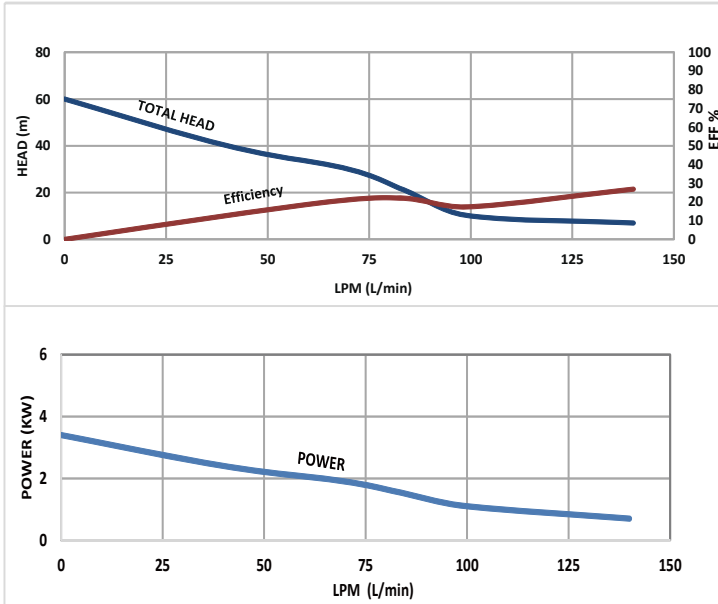


GMSW252 50Hz

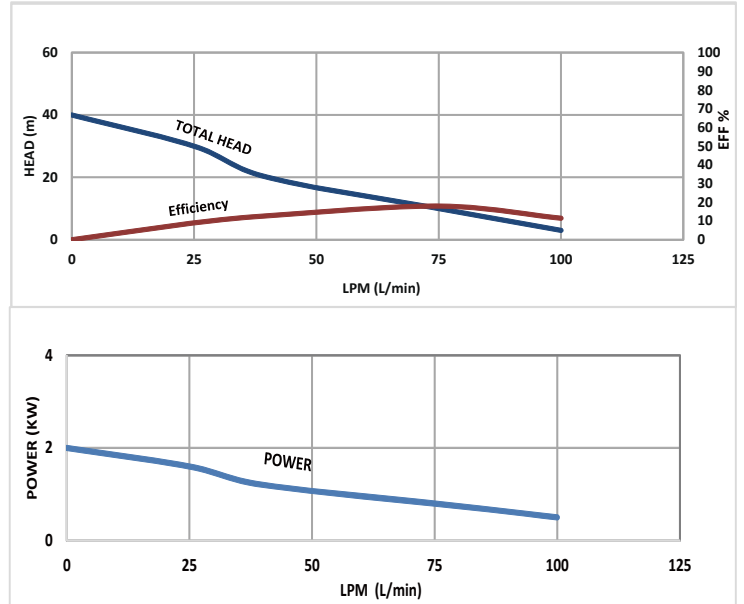


性能曲線表 PERFORMANCE CURVES (GMSW)

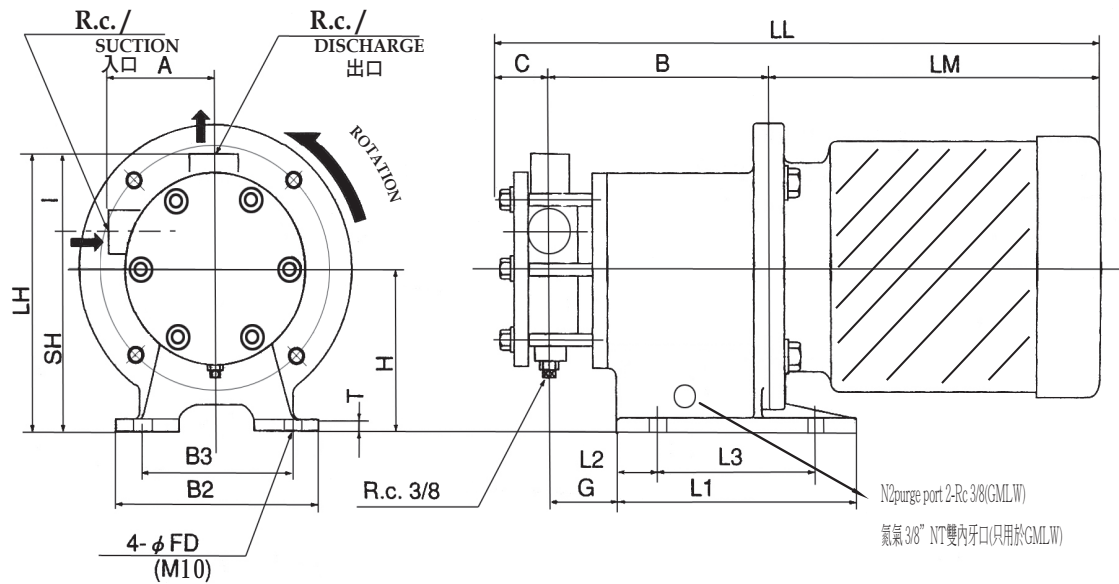
GMSW402-5HP-4P-60Hz



GMSW402-5HP-4P-50Hz



■ 尺寸 DIMENSIONS (GMSW)

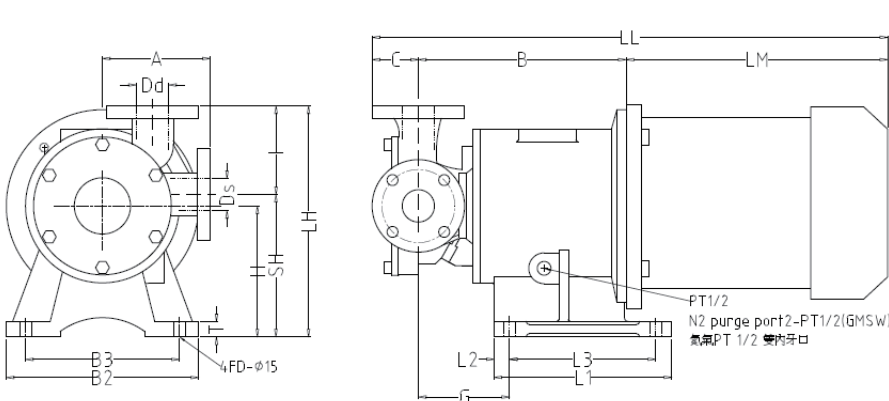


單位/unit:mm

型號 PUMP SIZE	馬達 MOTOR		進出口 BORE		泵和馬達 PUMP & MOTOR DIMENSION											馬達座 BASE PLATE							重量 WEIGHT APPROX (kg)		
	框號 FRAME SIZE	輸出 OUT PUT (Kw)	口徑 Ds	口徑 Dd	A	B	C	H	I	SH	LH	LM	LL	G	L1	L2	L3	B2	B3	T	FD	PUMP	MOTOR	TOTAL	
GMSW201	80M	0.75	20	20	80	170	35	110	55	135	190	260	465	80	180	30	120	160	130	12	ψ 12	20	17	37	
	90L	1.5	Rc3/4	Rc3/4	170	40	110	75	140	215	312	517	312									517	20	24	44
GMSW251	90L	1.5,2.2	25	25	105	170	40	110	75	140	215	312	522	80	180	30	120	160	130	12	ψ 12	20	24	44	
	(100L)	2.2	Rc1	Rc1	180	170	200	275	328	548	250	30	190									200	160	18	25
GMSW252	90L	2.2	25	25	105	170	40	110	75	140	215	312	522	80	180	30	120	160	130	12	ψ 12	20	24	44	
	(100L)	(2.2)	Rc1	Rc1	180	170	200	275	364	584	250	30	190									200	160	18	25

※ LM,LL dimensions and motor weight way vary depending on motor used。LM與LL尺寸與重量會依廠牌不同而改變。

※ This motor size and weight, begin TECO motor as the basis。此表馬達尺寸與重量,皆以東元馬達為依據。



型號 PUMP SIZE	馬達 MOTOR		進出口BORE				泵和馬達 PUMP & MOTOR DIMENSION											馬達座 BASE PLATE							重量 WEIGHT APPROX (kg)		
	框號 FRAME SIZE	輸出 OUT PUT (kw)	入口 SUCT	法蘭 S	出口 DISCH	法蘭 D	A	B	C	H	I	SH	LH	LM	LL	G	L1	L2	L3	B2	B3	T	FD	PUMP	MOTOR	TOTAL	
GMSW-402	112M	3.7	40	5K	40	5K	140	270	60	170	115	185	300	340	670	119	230	20	190	250	200	20	ψ 15	52	46	98	

※ The motor is 4 poles。馬達為4極。